

ITEA offer a wide variety of products relating to environmental allergen; pollens, house dust mites, animal hair and epithelia, and fungi.

■ ELISA Kits, Antibody coated microplates type

These are ELISA kits which are complete and optimized ready-to-use immunoassays that include a 96-well strip plate that is pre-coated with an antibody specific to the antigen of your interest.



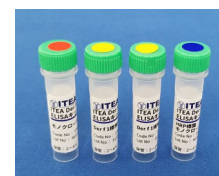
Store at 2-8°C

Product code	Product name	Package
1-OVA-001	ITEA OVA ELISA Kit	96 wells/kit
1-CJ1-001	ITEA Cry j 1 ELISA Kit	96 wells/kit
1-DF1-001	ITEA Der f 1 ELISA Kit	96 wells/kit
1-DP1-001	ITEA Der p 1 ELISA Kit	96 wells/kit
1-DFH-001	ITEA Der f 1 ELISA Kit, High Sensitive	96 wells/kit
1-DF2-001	ITEA Der f 2 ELISA Kit* ¹	96 wells/kit

*¹ This kit is not possible to quantitate the exact concentration of Der f 2 in samples containing Der f 2 and Der p 2, since the antibody that cross-reacts with Der f 2 and Der p 2 is used.

■ ELISA Kits, Self-build type

These consist of antibodies (primary antibody for pre-coating and secondary antibody for detection) and a standard solution necessary to measure the following allergens by sandwich ELISA. The secondary antibodies can be selected from biotin-labeled or HRP-labeled.



Store at 2-8°C

Label	Product code	Product name	Package* ²
BIOTIN	1-CJ1-002	ITEA Cry j 1 ELISA Self-build Kit (Biotin-labeled)	For 3 plates
BIOTIN	1-DF1-002	ITEA Der f 1 ELISA Self-build Kit (Biotin-labeled)	For 3 plates
BIOTIN	1-DP1-002	ITEA Der p 1 ELISA Self-build Kit (Biotin-labeled)	For 3 plates
BIOTIN	1-DF2-002	ITEA Der f 2 ELISA Self-build Kit (Biotin-labeled)* ³	For 3 plates
HRP	1-CJ1-003	ITEA Cry j 1 ELISA Self-build Kit (HRP-labeled)	For 3 plates
HRP	1-DF1-003	ITEA Der f 1 ELISA Self-build Kit (HRP-labeled)	For 3 plates
HRP	1-DP1-003	ITEA Der p 1 ELISA Self-build Kit (HRP-labeled)	For 3 plates
HRP	1-DF2-003	ITEA Der f 2 ELISA Self-build Kit (HRP-labeled)* ³	For 3 plates

*² For three 96-well microplates.

*³ This kit is not possible to quantitate the exact concentration of Der f 2 in samples containing Der f 2 and Der p 2, since the antibody that cross-reacts with Der f 2 and Der p 2 is used.

■ Purified Allergens

Purified Allergens have been added to our product lineup.

You will make use of these products in your research along with our crude extracts and other products.



Purification Method and Specification

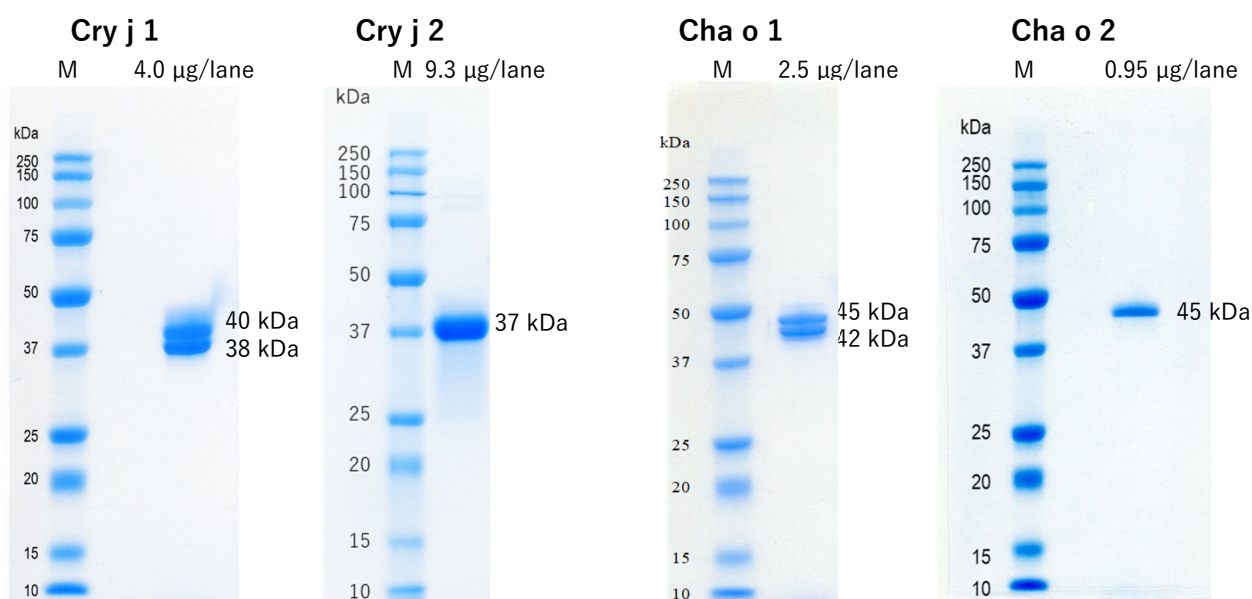
Purified by ammonium sulfate salting out and various types of chromatography.

Not containing protective agents or preservatives.

Store at -20°C or less, -80°C recommended

Product code	Product name	Package
3-CJ1-001	Purified Cry j 1	Cry j 1, 50 μg
3-CJ2-001	Purified Cry j 2	Cry j 2, 25 μg
3-CO1-001	Purified Cha o 1	Cha o 1, 50 μg
3-CO2-001	Purified Cha o 2	Cha o 2, 25 μg

© Electrophoresis Image (Performed under reducing conditions)



■ Allergen Extracts

These are crude lyophilized extracts prepared from mite growth medium, mite bodies, pollens, pet hair and epithelium, and fungal powder. They will form phosphate buffered saline (pH 7.4) when 1 mL of distilled water is added.



Store at 2-8°C

Product code	Product name	Package
4-DF-001	House Dust Mite Extract, Whole Culture (Df) ^{*1}	Der f 1, 10 µg
4-DP-001	House Dust Mite Extract, Whole Culture (Dp) ^{*1}	Der p 1, 10 µg
4-DF-002	House Dust Mite Extract, Whole Body (Df) ^{*2}	Total protein, 5 mg
4-DP-002	House Dust Mite Extract, Whole Body (Dp) ^{*2}	Total protein, 5 mg
4-CJ-001	Japanese Cedar Pollen Extract	Cry j 1, 10 µg
4-PP-001	Timothy Pollen Extract	Concentration is not standardized. ^{*3}
4-AA-001	Ragweed Pollen Extract	Concentration is not standardized. ^{*3}
4-FD-001	Cat Hair and Epithelia Extract	Concentration is not standardized. ^{*3}
4-CF-001	Dog Hair and Epithelia Extract	Concentration is not standardized. ^{*3}
4-AT-001	Fungi Extract (<i>Alternaria Alternata</i>)	Concentration is not standardized. ^{*3}
4-AS-001	Fungi Extract (<i>Aspergillus fumigatus</i>)	Concentration is not standardized. ^{*3}

^{*1} Culture medium extract: Extract from mite growth medium including feed and excrement.

^{*2} Mite body extract: Extract from house dust mite bodies.

^{*3} Only total protein is measured. Quantity varies with each lot.

■ Allergen Extract For Immunization

These products are suitable for the creation of mouse models of asthma caused by mite allergen exposure.

Store at -20°C or less, -80°C recommended

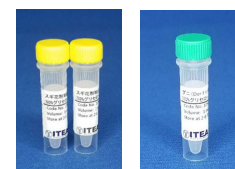


Product code	Product name	Package
4-DF-003	House Dust Mite Extract For Immunization (Df)	Total protein, 1 mg
4-DP-003	House Dust Mite Extract For Immunization (Dp)	Total protein, 1 mg

■ Allergen Extracts containing glycerol

We offer crude extracts of some allergens that can be used as antigens for test along with ISO 4333. If used for this purpose, dilute 500-fold (for 4-CJ-004, 4-DP-004) or 1000-fold (for 4-DF-004) in phosphate buffered saline containing polysorbate 20 (pH 7.4) before use.

Store at -20°C^{*4}



4-CJ-004

4-DF-004

Product code	Product name	Package
4-CJ-004	Japanese Cedar Pollen Extract (Contains 50% Glycerol)	Cry j 1, 15 µg ^{*5}
4-DF-004	House Dust Mite Extract, Whole Culture (Df) (Contains 50% glycerol)	Der f 1, 15 µg ^{*6}
4-DP-004	House Dust Mite Extract, Whole Culture (Dp) (Contains 50% glycerol)	Der p 1, 15 µg ^{*5}

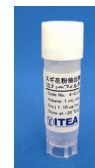
^{*4} Storage at -20°C or less may cause frozen because of containing glycerol.

^{*5} 4-CJ-004 and 4-DP-004 contain 7.5 µg/mL x two bottles in each package.

^{*6} 4-DF-004 contains a bottle of 15 µg/mL.

■ Allergen Extracts, 0.2 µm filtered and no preservatives

These are crude extracts filtered 0.22 µm and not containing preservations that have been prepared from mite growth medium, mite bodies, pollens, pet hair and epithelium, and fungal powder. They are phosphate buffered saline (pH 7.4) solution.



Store at -20°C or less, -80°C recommended

Product code	Product name	Package
4-CJ-005	Japanese Cedar Pollen Extract (0.2 µm filtered, no preservatives)	Cry j 1, 10 µg
4-PP-005	Timothy Pollen Extract (0.2 µm filtered, no preservatives)	Concentration is not standardized.*1
4-AA-005	Ragweed Pollen Extract (0.2 µm filtered, no preservatives)	Concentration is not standardized.*1
4-FD-005	Cat Hair and Epithelia Extract (0.2 µm filtered, no preservatives)	Concentration is not standardized.*1
4-CF-005	Dog Hair and Epithelia Extract (0.2 µm filtered, no preservatives)	Concentration is not standardized.*1
4-AT-005	Fungi Extract (<i>Alternaria Alternata</i>) (0.2 µm filtered, no preservatives)	Concentration is not standardized.*1
4-AS-005	Fungi Extract (<i>Aspergillus fumigatus</i>) (0.2 µm filtered, no preservatives)	Concentration is not standardized.*1

*1 Only total protein is measured. Quantity varies with each lot.

■ Antibodies

We offer polyclonal antibodies of bovine serum albumin (BSA).



Store at 2-8°C

Product code	Product name	Package
2-BP-001	Rabbit Anti-BSA Polyclonal Antibody	Antibody, 0.1 mg
2-BP-002	Biotinylated Rabbit Anti-BSA Polyclonal Antibody	Antibody, 0.1 mg

ITEA Inc. Institute of Tokyo Environmental Allergy Reagent Development Dept.

113-0001 6F, Hakusan NT Building, 1-33-18 Hakusan, Bunkyo-ku, Tokyo

Mail reag-info@itea.jp

TEL +81-3-3526-2031 FAX +81-3-3526-2032