

QuickGene

NUCLEIC ACID ISOLATION SYSTEMS

PATENTED POROUS MEMBRANE FOR HIGH-PURITY ISOLATION

- + Quick and easy operation
- + Semi and fully automated processes
- + Intact DNA isolation from varying volume and diverse samples origins

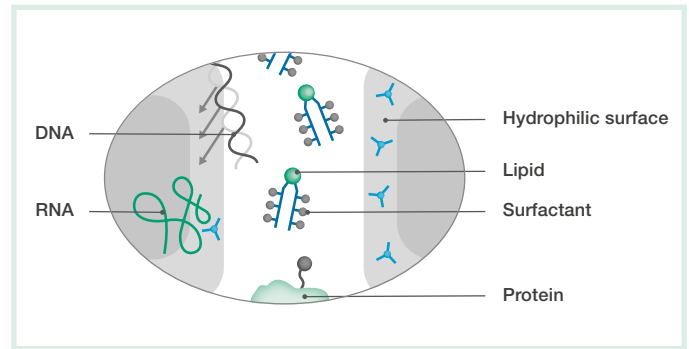


INTRODUCTION

The **QuickGene series** uses a patented porous membrane to realize a **low pressure** nucleic acid extraction with high yield and purity.

The product line combines semi to fully automated systems adapted to customers' needs. This enables quick and easy isolation of nucleic acid from various samples including whole blood/tissues/cells/plants/virus and others, as well as diverse sample volumes.

The **QuickGene** innovative isolation method contributes to the reduction of the users' burden and supports the high throughput in routine analytical laboratory work.



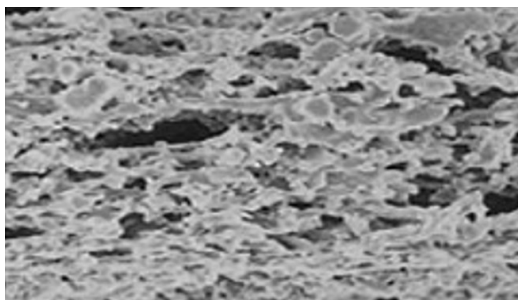
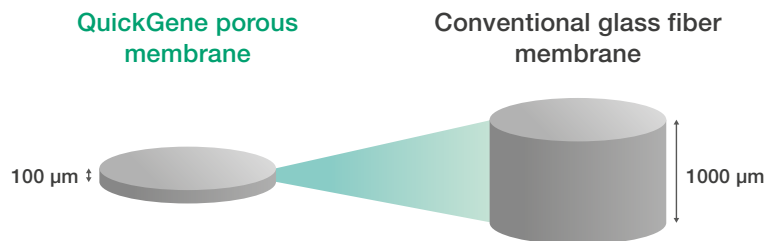
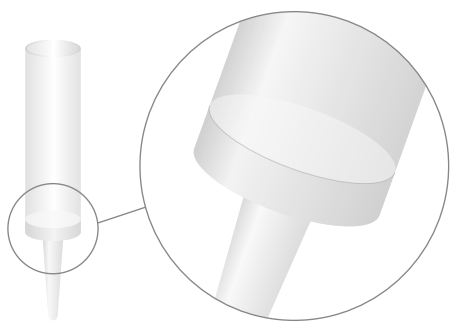
Adsorption of nucleic acids

Owing to their hydrophilic properties, nucleic acids are adsorbed onto the membrane, while protein and lipids, which are comparatively hydrophobic, tend to seep out of the membrane.

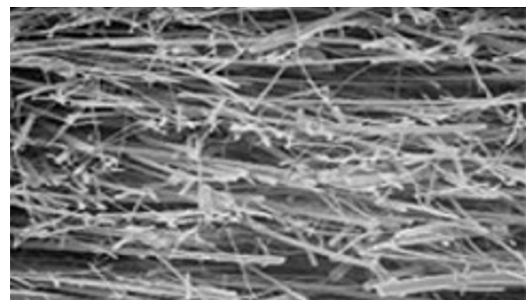
CORE TECHNOLOGY

The nucleic acid adsorption medium used in QuickGene series is a patented porous membrane developed through application of advanced polymer membrane production technology. Compared to conventional isolation glass fiber membranes, the

QuickGene material is ten times thinner, thus providing rapid and reliable isolation at low pressure, preventing damage of the final product.



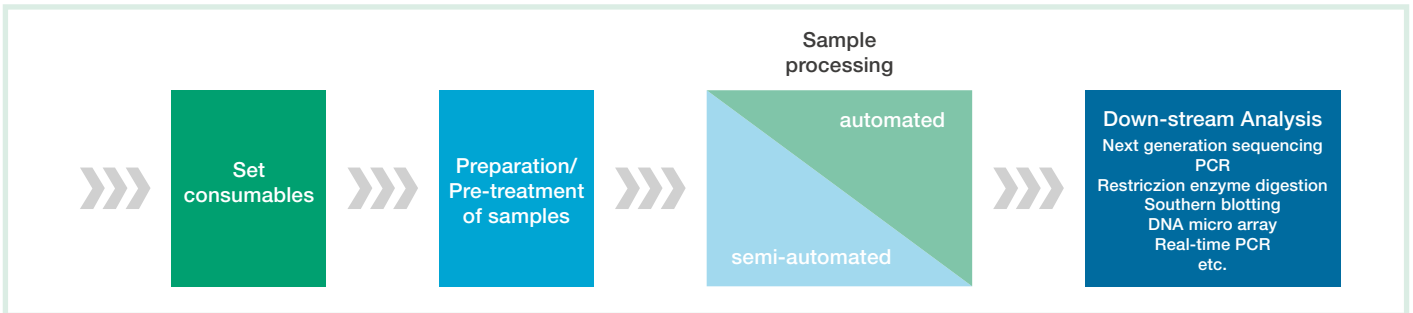
QuickGene porous membrane



Conventional glass fiber membrane

DNA/RNA ISOLATION PROCESS

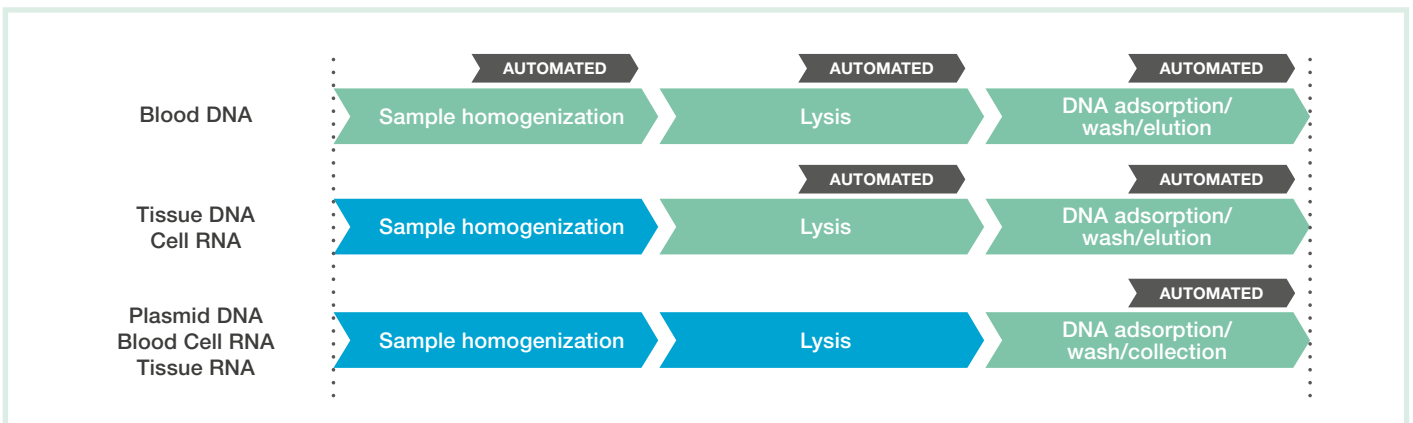
QUICK & EASY PROCESSING



AUTOMATED PROCESS DEPENDING ON PROTOCOLS

Completely automated DNA/RNA extraction process from primary sample to final DNA storage, ensuring no cross-contamination and application errors. The **QuickGene-Auto12S** and

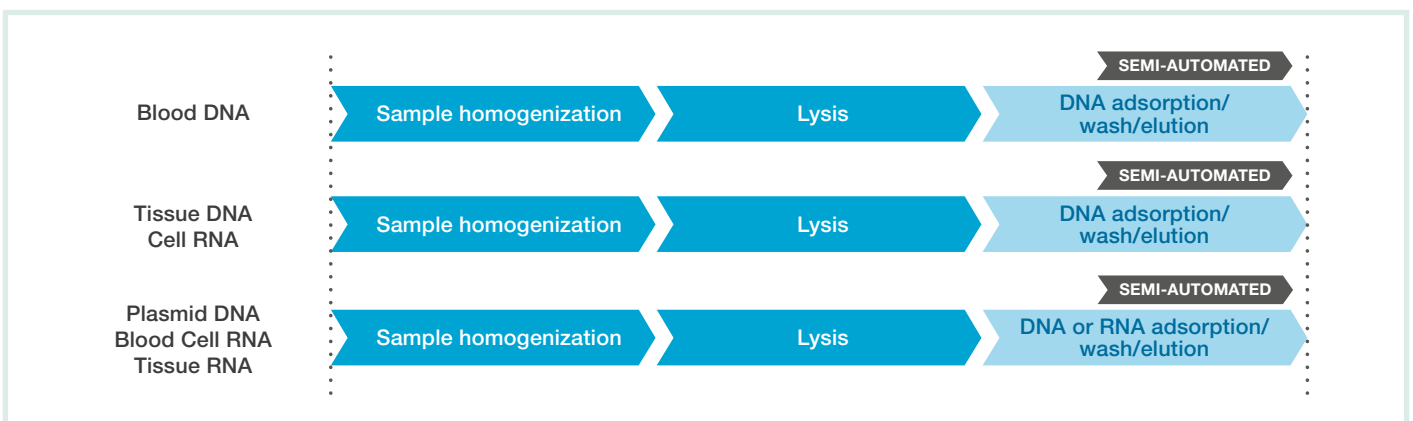
QuickGene-Auto24S benchtop device system provides short operation time due to the simultaneous processing of multiple samples using pre-filled reagent strips.



SEMI-AUTOMATED PROCESS

The compact and handy design of the **QuickGene-Mini8L** and **QuickGene-Mini480** enables gentle nucleic acid isolation without centrifugation or removal and transfer of liquid – saving valuable time. The 2-in-1 multifunction characteristics of the de-

vices allow the exchange of adapters and holder sets as well as enable to process 1 to 48 samples per run, volume ranging from 200 µl to 2 ml.



SELECTION GUIDE

Sample type	Cartridge size (ex.) sample volume	Processing	Isolation kits	Ref. Code	Isolation device
Genomic DNA isolation					
Blood - Whole blood - Buffy coat - Animal blood - Plasma - Serum	Small (ex.) 200 µl of blood	MANUAL	QuickGene SP kit DNA whole blood	SP-DB	Centrifuge
		SEMI-AUTOMATED	QuickGene DNA whole blood kit S	DB-S	QG-Mini480
		AUTOMATED	QuickGene-AutoS DNA Blood kit	AS-DB	QG-Auto12S QG-Auto24S
	Large (ex.) 2 ml of blood	SEMI-AUTOMATED	QuickGene DNA whole blood kit L	DB-L	QG-Auto240L QG-Mini8L
		AUTOMATED			
Tissue - Animal tissue - Plant - Insect - Fish - Swab - FFPE - Cultured cell - Virus - Food	Small (ex.) 5 mg of tissue	MANUAL	QuickGene SP kit DNA tissue	SP-DT	Centrifuge
		SEMI-AUTOMATED	QuickGene DNA tissue kit S	DT-S	QG-Mini480
		AUTOMATED	QuickGene-AutoS DNA Tissue kit	AS-DT	QG-Auto12S QG-Auto24S
	Large (ex.) 50 mg of tissue	SEMI-AUTOMATED	QuickGene DNA tissue kit L	DT-L	QG-Mini8L
		AUTOMATED			
Plasmid DNA isolation					
E. coli	Small (ex.) 1 ml culture of <i>E. coli</i>	SEMI-AUTOMATED	QuickGene Plasmid kit S II	PL-S2	QG-Mini480
		AUTOMATED	QuickGene-AutoS Plasmid kit	AS-PL	QG-Auto12S QG-Auto24S
Total RNA isolation					
Blood - Leukocyte - Fresh whole blood	Small (ex.) 2 ml of blood	SEMI-AUTOMATED	QuickGene RNA blood cell kit S	RB-S	QG-Mini480
		AUTOMATED	QuickGene-AutoS RNA Blood kit	AS-RB	QG-Auto12S QG-Auto24S
Tissue - Animal tissue - Insect - Virus	Small (ex.) 30 mg of tissue	SEMI-AUTOMATED	QuickGene RNA tissue kit S II	RT-S2	QG-Mini480
		AUTOMATED	QuickGene-AutoS RNA tissue kit	AS-RT	QG-Auto12S QG-Auto24S
Cell - Cultured cell - Plant - <i>E. coli</i>	Small (ex.) 1x10 ⁶ cells	SEMI-AUTOMATED	QuickGene RNA cultured cell kit S	RC-S	QG-Mini480
		SEMI-AUTOMATED	QuickGene RNA cultured cell kit S II	RC-S2	QG-Mini480
		AUTOMATED	QuickGene-AutoS RNA cultured cell kit	AS-RC	QG-Auto12S QG-Auto24S

INSTRUMENTS

CODE	PRODUCT
631-46159	QuickGene-Auto12S
638-46169	QuickGene-Auto24S
636-31579	QuickGene-Mini480
628-05969	QuickGene-Mini8L



KITS & CONSUMABLES

CODE	PRODUCT
635-46179	AS-DB AutoS DNA Blood Kit
632-46189	AS-DT AutoS DNA Tissue Kit
630-23549	DB-S DNA Whole Blood Kit S
633-23539	DB-L DNA Whole Blood Kit L
637-23559	DT-S DNA Tissue Kit
632-29589	DT-L DNA Tissue Kit
631-23579	RB-S RNA Blood Cell Kit S
638-23609	RT-S2 RNA Tissue Kit SII
634-23569	Plasmid PL-SII
635-23619	SP DNA Whole Blood Kit
632-23629	SP DNA tissue Kit
638-23589	RNA Cultured Cell Kit S
635-23599	RNA cultured cell HC Kit



For further information on our products
or to place an order, please contact us.

FUJIFILM Wako Chemicals Europe GmbH
Fuggerstr. 12
41468 Neuss, Germany

Phone +49 2131 311 271
Fax +49 2131 311 110

labchem_wkeu@fujifilm.com
www.wako-chemicals.de

