


All Made in Japan, High-Quality

JQ Vial Kit

- Japan Quality -



- 
- **Manufactured in Japan**
 - **Low sample adsorption**
 - **Minimized Na⁺/impurities elution**

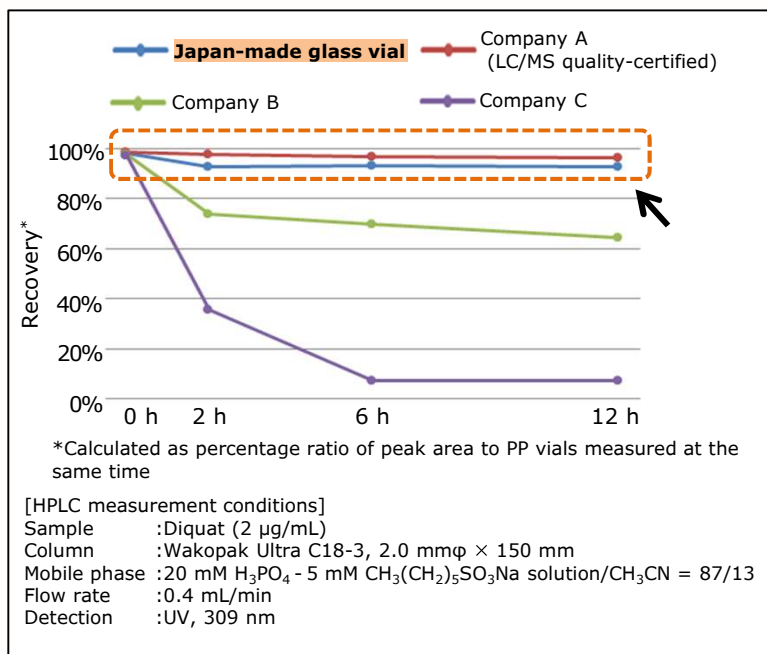
*All made in Japan,
High-Quality vial kit*

JQ Vial Kit is an “all made in Japan” vial kit comprising a glass vial and a septum cap, both made in Japan. The vial is manufactured by a unique method with an optimized processing temperature in the high-temperature molding process, enabling low adsorption and low alkaline elution without chemical treatment with silane, etc. The septum cap is also of high quality, minimizing elution of impurities.

In chromatographic analysis such as GC and LC, there are risks of unexpected analytical defects such as sample adsorption, decomposition, and appearance of ghost peaks, depending on the quality of the sample containers, the vial and septum cap. As the recent developments in analytical equipment and technology bring a need for ever more sophisticated analysis, it is critical to focus on the quality of the sample containers as well.

(1) Comparison of Sample Adsorption to Vials

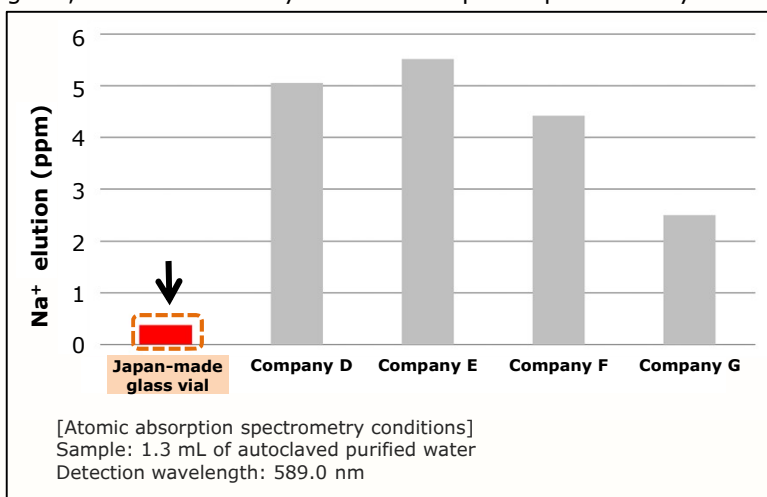
Sample adsorption to vials was tested to compare our Japan-made glass vial with vial products from other companies. Diquat, used as a herbicide and known to be highly adsorptive to glass, was used as sample. After sealing diquat solution into a vial, recovery up to 12 hours was measured by HPLC.



Diquat adsorption to Japan-made glass vial was hardly observed up to 12 hours, demonstrating as low adsorption as LC/MS certified high-quality glass vials from other companies. As sample adsorption to vials causes sample loss, use of low-adsorption vials is important to avoid problems in analysis.

(2) Comparison of Na⁺ Elution from Vials

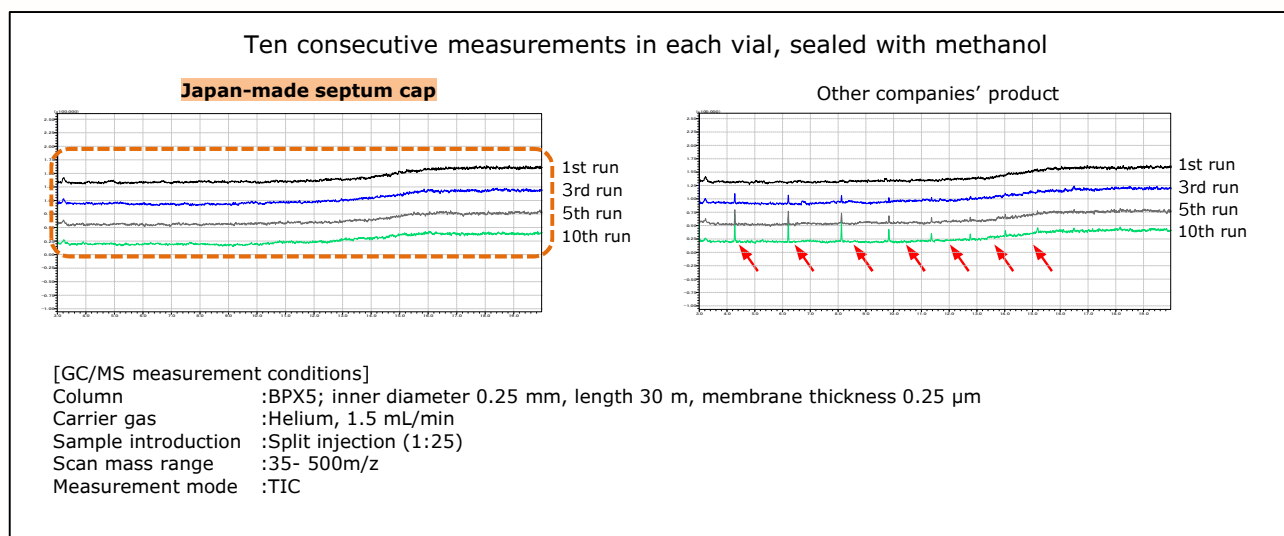
Na⁺ elution from vials was tested to compare our Japan-made glass vial with vial products from other companies. After sealing purified water into vials, Na⁺, known to be an alkaline component eluted from glass, was measured by atomic absorption spectrometry.



Japan-made glass vial was shown to be associated with low Na⁺ elution. As elution of alkaline components from vials causes sample decomposition, etc., it is critical to pay attention not only to sample adsorption to vials, but also elution from vials.

(3) Comparison of Impurities Elution from Septum Caps

Impurities elution from septum caps was tested to compare our Japan-made septum cap with septum cap products from other companies. Leachables in each vial were measured by GC/MS 10 times consecutively.



In consecutive measurements, leachables observed with other companies' products were hardly detected with Japan-made septum cap. Leachables from a cap or septum can have unexpected effects on test results, such as appearance of ghost peaks. Thus, it is necessary in analytical testing to pay attention to the quality not only of vials, but also of septum caps.

Product Information

Manufacturers of compatible products :Shimadzu, Hitachi, Waters, Agilent, etc.
 Glass material :Borosilicate glass *low adsorption, low Na⁺ elution
 Septum material :Fluororesin/silicone *low impurities elution
 Specification of screw-top :9-425

List of JQ Vial Kit Products

All JQ Vial Kit products contain a Japan-made 1.5 mL screw-top vial.

Code No.	Vial Material	Write-on Spot	Preslit	Cap Color	Units per Package
636-52611	Clear Glass	-	-	Green	100
636-52591	Clear Glass	-	-	Blue	100
630-52631	Clear Glass	-	-	Black	100
634-52651	Clear Glass	-	-	White	100
633-52621	Clear Glass	-	●	Green	100
639-52601	Clear Glass	-	●	Blue	100
637-52641	Clear Glass	-	●	Black	100
631-52661	Clear Glass	-	●	White	100

Code No.	Vial Material	Write-on Spot	Pre-slit	Cap Color	Units per Package
634-52771	Clear Glass	●	-	● Green	100
630-52751	Clear Glass	●	-	● Blue	100
638-52791	Clear Glass	●	-	● Black	100
638-52811	Clear Glass	●	-	○ White	100
631-52781	Clear Glass	●	●	● Green	100
637-52761	Clear Glass	●	●	● Blue	100
631-52801	Clear Glass	●	●	● Black	100
635-52821	Clear Glass	●	●	○ White	100
632-52691	Amber Glass	-	-	● Green	100
638-52671	Amber Glass	-	-	● Blue	100
632-52711	Amber Glass	-	-	● Black	100
636-52731	Amber Glass	-	-	○ White	100
635-52701	Amber Glass	-	●	● Green	100
635-52681	Amber Glass	-	●	● Blue	100
639-52721	Amber Glass	-	●	● Black	100
633-52741	Amber Glass	-	●	○ White	100
636-52851	Amber Glass	●	-	● Green	100
632-52831	Amber Glass	●	-	● Blue	100
630-52871	Amber Glass	●	-	● Black	100
634-52891	Amber Glass	●	-	○ White	100
633-52861	Amber Glass	●	●	● Green	100
639-52841	Amber Glass	●	●	● Blue	100
637-52881	Amber Glass	●	●	● Black	100
637-52901	Amber Glass	●	●	○ White	100

Listed products are intended for laboratory research use only, and not to be used for drug, food or human use. / Please visit FUJIFILM Wako Laboratory Chemicals site: <https://labchem-wako.fujifilm.com/> / This leaflet may contain products that cannot be exported to your country due to regulations. / Bulk quote requests for some products are welcomed. Please contact us.

FUJIFILM Wako Laboratory Chemicals site

<https://labchem-wako.fujifilm.com>

FUJIFILM Wako Pure Chemical Corporation
 1-2, Doshomachi 3-Chome, Chuo-ku, Osaka 540-8605, Japan
 Tel: +81 6 6203 3741 Fax: +81 6 6203 1999
ffwk-cservice@fujifilm.com

FUJIFILM Wako Chemicals U.S.A. Corporation
 1600 Bellwood Road, Richmond, VA 23237, U.S.A.
 Toll-Free (U.S. only): +1 877 714 1920
 Tel: +1 804 271 7677 Fax: +1 804 271 7791
wkuslabchem@fujifilm.com

FUJIFILM Wako Chemicals Europe GmbH
 Fuggerstr 12, 41468 Neuss, Germany
 Tel: +49 2131 311 0 Fax: +49 2131 311 100
labchem_wkeu@fujifilm.com

FUJIFILM Wako Chemicals (Hong Kong) Limited
 Room 1111, 11/F, International Trade Centre, 11-19 Sha Tsui Road,
 Tsuen Wan, N.T., Hong Kong
 Tel: +852-2799-9019 Fax: +852-2799-9808
wkhk.info@fujifilm.com

FUJIFILM Wako (Guangzhou) Trading Corporation
 Room 3003, 30/F., Dong Shan Plaza 69, Xian Lie Zhong Road,
 Guangzhou, 510095, China
 Tel: +86-20-8732-6381(Guangzhou) Tel: +86-21-6288-4751(Shanghai)
 Tel: +86-10-6413-6388(Beijing)
wkgz.info@fujifilm.com