

Description

iCell® CardioTox Assay Medium is a **Serum-free, Albumin-free, Glucose-free** and **Xeno-free** medium formulation optimized for iCell Cardiomyocytes² assays for up to 4 days. iCell CardioTox Assay Medium can be used for both acute and chronic repeat dosing experiments.

Handling and Storage

Upon receipt, immediately transfer the bottle to the freezer at -20°C.

iCell CardioTox Assay Medium can be stored at -20°C for up to 1 year. Following thaw, store medium at 4°C for up to 2 weeks.

Preparing iCell CardioTox Assay Medium

1. Thaw iCell CardioTox Assay Medium overnight at 4°C.
2. Store at 4°C for up to 2 weeks.

Using iCell CardioTox Assay Medium

iCell CardioTox Assay Medium can be used for both short-term (≥4 hours) and long-term (≤4 days) assays. This Quick Guide is designed for use with iCell Cardiomyocytes²; however the medium can also be used with the original iCell Cardiomyocytes product. Contact Technical Support for guidance for use with iCell Cardiomyocytes.

1. Culture the cells for at least 4-7 days as described in their User's Guides until assay timepoint.
2. Equilibrate iCell CardioTox Assay Medium to room temperature.
3. Perform a 100% medium change using iCell CardioTox Assay Medium. See **Table 1** below for the recommended medium volume per well for various cell culture vessels or assay microplates.

Note: *If assaying the same day when switching to iCell CardioTox Assay Medium, wash wells with iCell CardioTox Assay Medium before feeding to remove remaining serum.*

Table 1: Summary of Useful Volumes and Measures

All volumes and measures are per well, if applicable.

Vessel or Plate	Surface Area (cm ²)	Volume (ml)
96-well	0.32	0.1
384-well	0.11	0.04
48-well MEA		0.3
96-well MEA		0.2
E-Plate Cardio 96	0.196	0.1

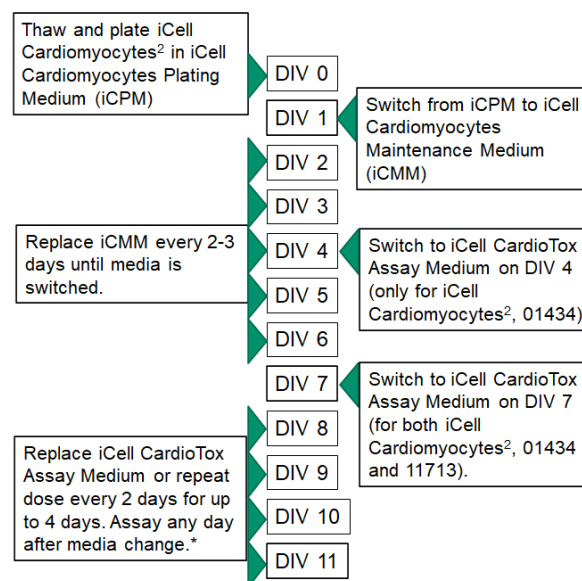
4. Culture the cells at 37°C, 5% CO₂ for at least 4 hours prior to assaying.

Maintaining the Cells in iCell CardioTox Assay Medium

1. Replace the medium with fresh iCell CardioTox Assay Medium every 2 days. See **Table 2** for example workflow schedule.
2. The recommended waiting period before assaying cells is at least 4 hours after medium change.
3. For all assay formats, cells can be cultured for a maximum of 4 days in iCell CardioTox Assay Medium at 37°C, 5% CO₂.

Note: *A weekend-free workflow for the iCell CardioTox Assay Medium is not recommended. For optimal assay performance, medium has to be changed every 48 hours. For functional readouts, wait 4 hours after medium change.*

Table 2: Workflow for assaying iCell Cardiomyocytes² with iCell CardioTox Assay Medium.



*see note under Step 3 of Maintaining the Cells section

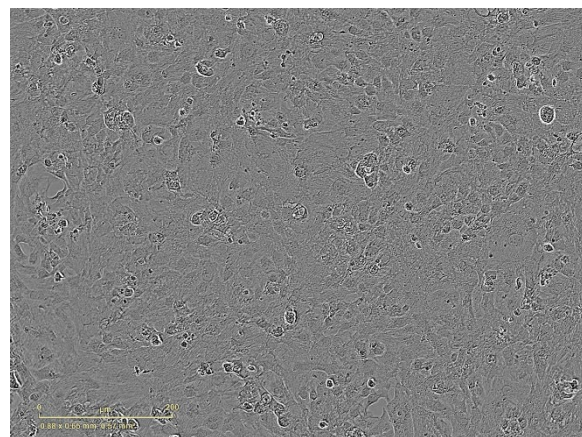


Figure 1: iCell Cardiomyocytes², 01434 imaged at 20X in a 96-well plate at DIV 11. The cells were initially cultured for 7 days in iCell Cardiomyocytes Maintenance Medium followed by 4 days in iCell CardioTox Assay Medium.

Contacting Technical Support


Email: fcdi-support@fujifilm.com

Phone: 1-877-320-6688

Conditions of Use

The media are for RESEARCH USE ONLY. The media is transferred to recipient, without charge, AS IS, for use solely by recipient in solely recipient's internal research and not for any further transfer by recipient and not for any commercial or other uses or purposes including use in manufacturing or quality control, use in the provision of services to any other person, or any diagnostic or therapeutic use in humans or other animal subjects.

Trademarks

iCell and MyCell are registered trademarks, and Cellular Dynamics and the  logo are trademarks of FUJIFILM Cellular Dynamics, Inc. All other brands, product names, company names, trademarks, and service marks are the properties of their respective owners.

Copyright Notice

© 2021 FUJIFILM Cellular Dynamics, Inc. All rights reserved. This document may not be reproduced, distributed, modified or publicly displayed without the prior express written permission of FUJIFILM Cellular Dynamics, Inc.

Revision History

Document ID: X1044

Version 1.0 September 2021