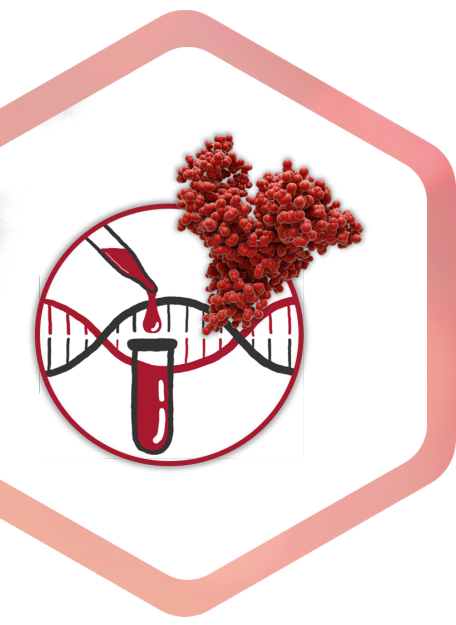


# RECOMBUMIN®

## Improving diagnostics

Due to the unsurpassed purity of Recombumin® the binding sites for PCR inhibitors will be free (unlike BSA or plasma derived HSA), consequently making the test more effective.

Save valuable time preparing samples; the purity of Recombumin® allows amplification to occur with lower levels of template DNA, or from samples that are "dirtier".



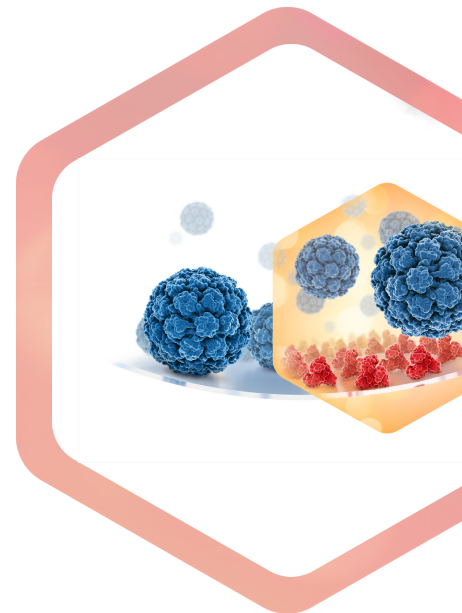
### INCREASED EFFECT WITH RECOMBINANT HUMAN ALBUMIN IN YOUR PCR OR LAMP BASED DIAGNOSTIC

- Prevents non-specific adsorption of the reagents to the PCR tube.
- Acts as an enhancer as it binds to PCR inhibitors (LAMP, RT-LAMP).
- Enables the signal to be achieved quicker.

Recombumin® is confirmed to be virus free, eliminating the risk of false positives from recombinant albumin.

### RECOMBUMIN® & NON-SPECIFIC SURFACE ADSORPTION

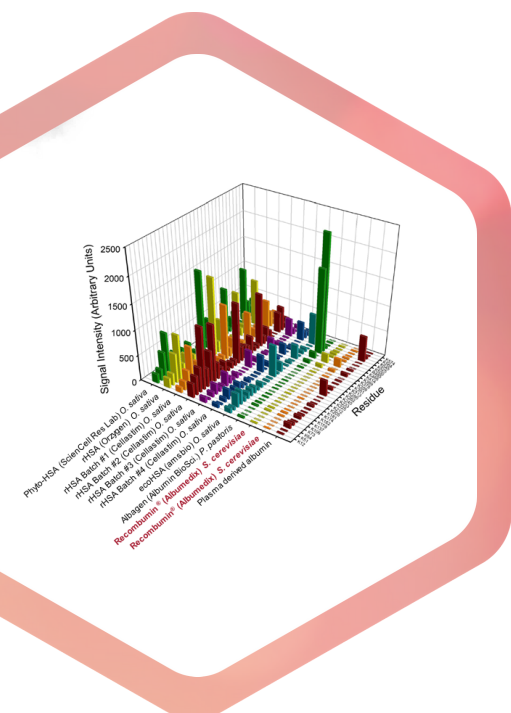
- Albumin readily adsorbs to both hydrophobic and hydrophilic surfaces.
- It will remain attached during washing and over time.
- Surface coverage is typically achieved through a single layer of recombinant albumin.
- Loss of material leads to uncertainty of administered dose.
- Risk of adverse events due to dose inaccuracy, surface induced aggregation or changes in higher order structure of the drug.
- The more hydrophobic the surface the more pronounced the adsorption.
- May also risk decrease in efficiency



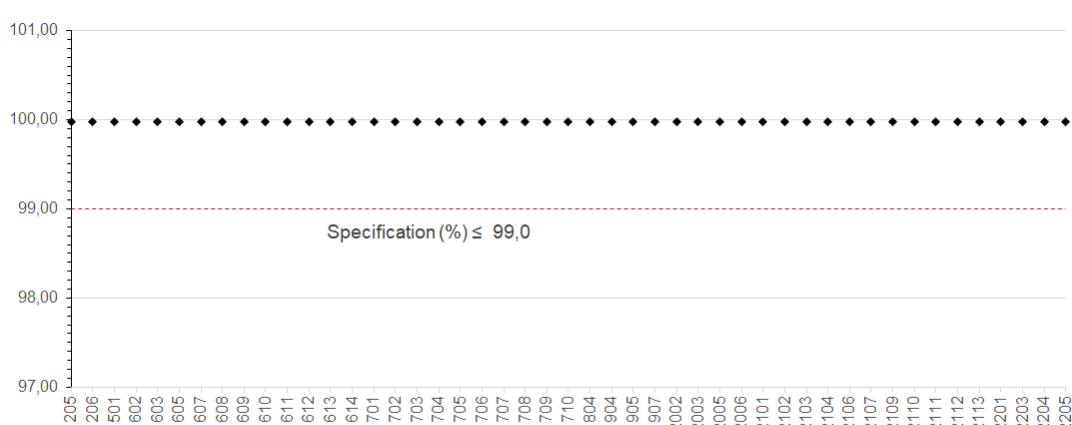
### BENCHMARKING BY HEALTH CANADA SHOWS SUPERIOR PURITY & QUALITY OF ALBUMEDIX' RECOMBINANT ALBUMINS

Health Canada has performed a comprehensive study on glycosylation (digest + MS) of various human albumin sources showing:

- Yeast-derived albumin has fewer glycosylation sites compared to rice-derived recombinant albumin
- Albumedix' albumins from *S. cerevisiae* has the lowest glycosylation sites and levels of all recombinant albumins
- Rice-derived albumin exhibits some notable batch to batch variation presumably due to the production procedure
- Human sourced albumin will have a relatively low but heterogeneous glycosylation pattern due to the many different donors contributing to each batch



### RECOMBUMIN PURITY (SDS-PAGE) IS CONSISTENTLY ABOVE 99.9%



Albumedix recombinant human albumin (rHA) products are manufactured at cGMP ICH Q7 standards at our own manufacturing site in Nottingham, UK. The products are produced using a proprietary yeast strain (*Saccharomyces cerevisiae*) with very high batch-to-batch consistency. We have more than 25 years of manufacturing experience