

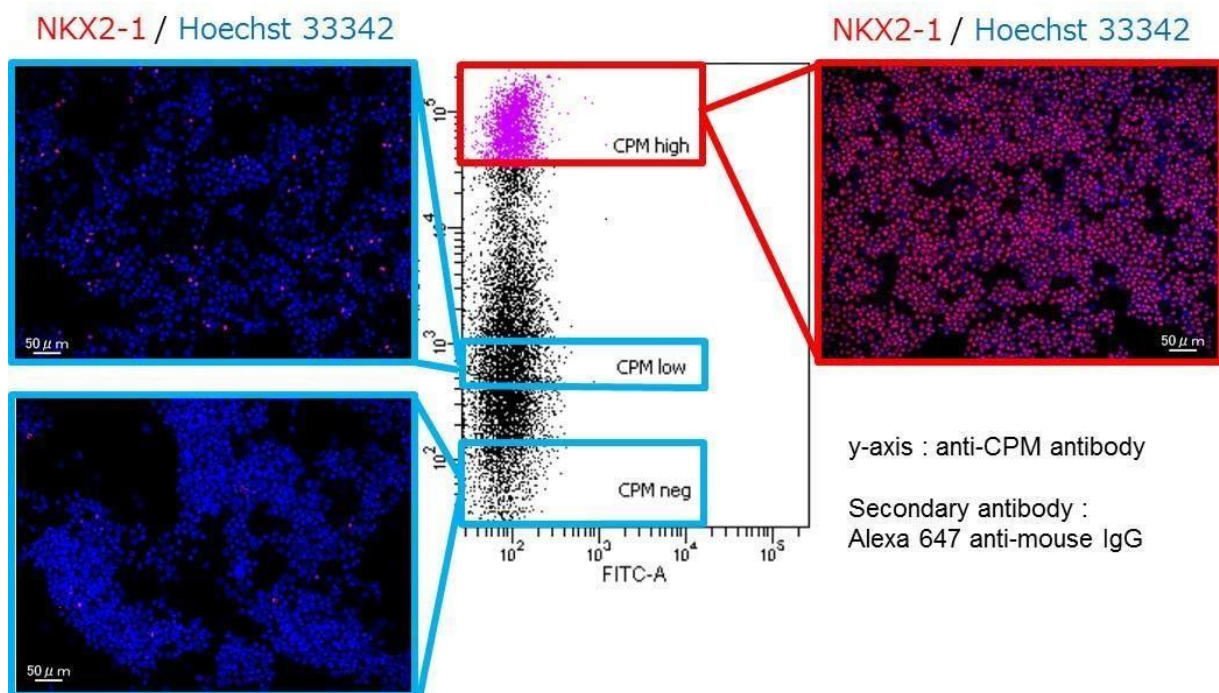
A marker for airway and alveolar progenitor cells

Anti CPM, MAb

Carboxypeptidase M (CPM) is an enzyme present on the surface of the cell membrane that catalyzes cleavage of C-terminal arginine and lysine residues from polypeptides and proteins. It has been reported that CPM can be used as a marker for airway, alveolar and hepatic progenitor cells.

Example of Use

Human iPS cells were differentiated into lung progenitor cells. The differentiated cells were dissociated, stained with this CPM MAb, and sorted with flow cytometry. Cell populations that highly expressed CPM were consequently found to be suitable for differentiation into alveolar and airway epithelial cells.



< Data provided by Shimpei Goto, Graduate School of Medicine, Kyoto University* >
*The affiliation is as of the time the data was provided.

Wako Cat No.	Product Name	Grade	Package Size
014-27501	Anti CPM, Monoclonal Antibody (WK)	for Flow Cytometry	100 μL

Product outline

- Formulation: Phosphate buffer containing 50w/v% glycerol and 0.05w/v% sodium azide
- Concentration: 1.0 mg/mL (initial measured value)
- Subclass: Mouse IgG2b
- Applications
 - Flow cytometry 1:100~200
 - Immunofluorescence 1:100~1,000
 - Western blot 1:1,000

Referenecs

1. Hosokawa, M. *et al.*: *iScience*, **26(10)**, 107731 (2023).
2. Tamai, K. *et al.*: *Cell Rep. Methods*, **2(10)**, 100314 (2022).
3. Bluhmki, T. *et al.*: *Sci. Rep.*, **11**, 17028 (2021).
4. Yamamoto, Y. *et al.*: *Nat. Methods*, **14**, 1097 (2017).
5. Hawkins, F. *et al.*: *J. Clin. Invest.*, **127**, 2277 (2017).
6. Konishi, S. *et al.*: *Stem Cell Reports*, **6**, 18 (2016).
7. Kido, T. *et al.*: *Stem Cell Reports*, **5**, 508 (2015).
8. Gotoh, S. *et al.*: *Stem Cell Reports*, **3**, 394 (2014).

Listed products are intended for laboratory research use only, and not to be used for drug, food or human use. / Please visit FUJIFILM Wako Laboratory Chemicals site: <https://labchem-wako.fujifilm.com/> / This leaflet may contain products that cannot be exported to your country due to regulations. / Bulk quote requests for some products are welcomed. Please contact us.

FUJIFILM Wako Laboratory Chemicals site **<https://labchem-wako.fujifilm.com>**



FUJIFILM Wako Pure Chemical Corporation
1-2, Doshomachi 3-Chome, Chuo-ku, Osaka 540-8605, Japan
ffwk-cserservice@fujifilm.com

FUJIFILM Irvine Scientific
1830 E. Warner, Avenue, Santa Ana, CA 92705-5505, U.S.A.
Toll-Free (U.S. only): +1 800 577 6097
Tel: +1 949 261 7800 Fax: +1 949 261 6522
fsilssupport@fujifilm.com

FUJIFILM Wako Chemicals Europe GmbH
Fuggerstr 12, 41468 Neuss, Germany
Tel: +49 2131 311 0 Fax: +49 2131 311 100
labchem_wkeu@fujifilm.com

FUJIFILM Wako (Guangzhou) Trading Corporation
Room 3003, 30/F., Dong Shan Plaza 69, Xian Lie Zhong Road,
Guangzhou, 510095, China
Tel: +86-20-8732-6381(Guangzhou) Tel: +86-21-6288-4751(Shanghai)
Tel: +86-10-6413-6388(Beijing)
wkgz.info@fujifilm.com

FUJIFILM Wako Chemicals (Hong Kong) Limited
Room 1111, 11/F, International Trade Centre, 11-19 Sha Tsui Road,
Tsuen Wan, N.T., Hong Kong
Tel: +852-2799-9019 Fax: +852-2799-9808
wkhk.info@fujifilm.com