

Antifade Mountant for **fluorescent proteins /oil-immersion objectives**

High-resolution images with

Super Clear Mount

Super Clear Mount is designed to minimize spherical aberrations, enabling high-resolution imaging with high-NA oil-immersion objective lenses. Super Clear Mount is particularly powerful in super-resolution microscopy. Super Clear Mount is useful not only for thick brain tissues, but also for thin samples for cell biology and histology; Super Clear Mount should work better than conventional mounting media with high-NA oil-immersion objective lenses. Super Clear Mount offers the following benefits:

- **High-refractive index: ~1.52**
- **High-resolution imaging**
- **Compatible with CLSM and SRM**
- **Suppress photobleaching**

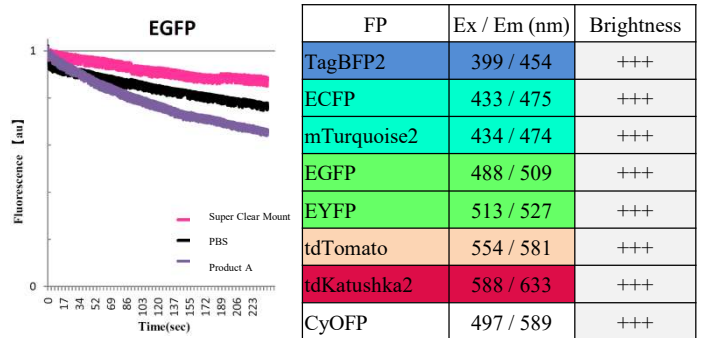


Figure 2. Fluorescent brightness antifading data of HEK293T cells expressing fluorescent proteins, mounted with different commercial antifade formulations.

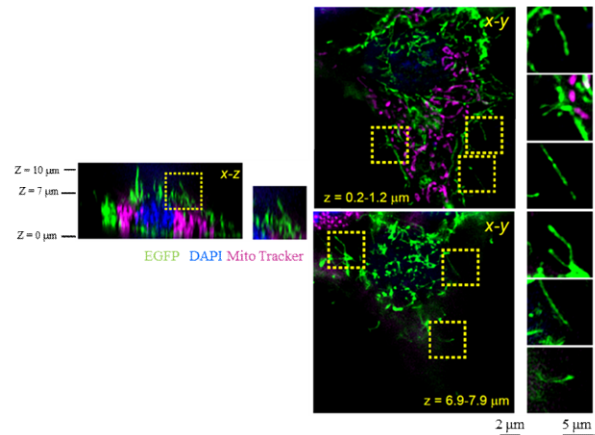


Figure 3. HEK293T cells expressing membrane EGFP were stained with DAPI (nuclei) and MitoTracker (mitochondria) and imaged using 3D SR-SIM.

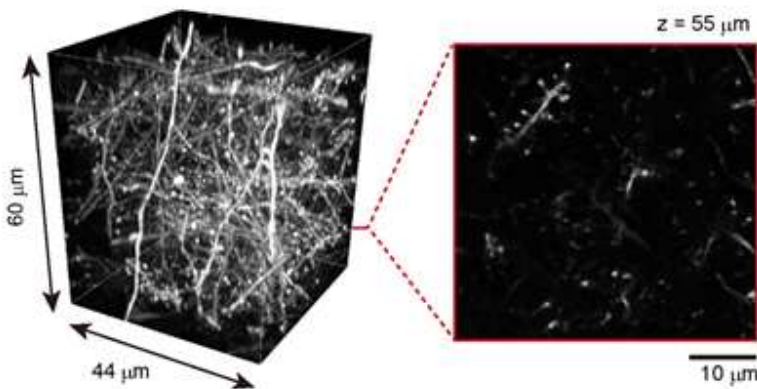


Figure 1. High-resolution confocal images of YFP-H line mouse 220 um brain with Super Clear Mount.

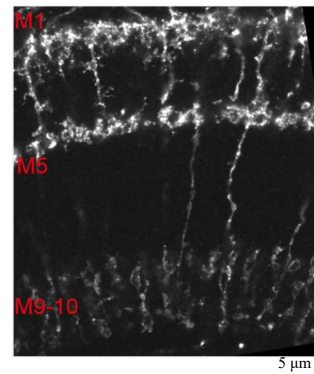


Figure 4. Super-resolution (Airyscan) images of the medulla of the bsh-Gal4 UAS-CD8GFP flies, mounted Super Clear Mount and imaged with an oil-immersion objective.

Resolution and brightness is maintained throughout depths in Super Clear Mount

Super Clear Mount refractive index (RI) of ~ 1.52 , which is optimized to that of cover glass, immersion oil and objectives.

With Super Clear Mount, the fluorescence level is maintained throughout all depths.

Super Clear Mount can be used to obtain super-resolution images of fluorescently labeled cells or tissue samples on microscope slides or coverslips.

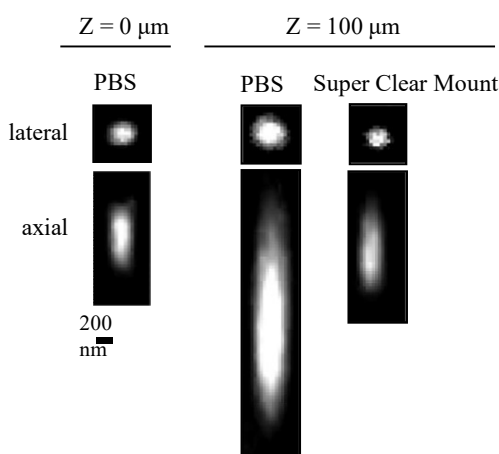


Figure 5. Point-spread-function (PSF) analysis of fluorescent microspheres (diameter, 100 nm) in Super Clear Mount.

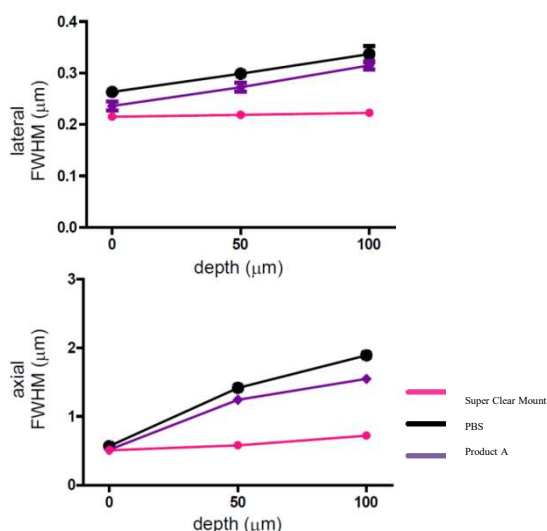


Figure 6. Full width at half maximum (FWHM) for lateral and axial directions.

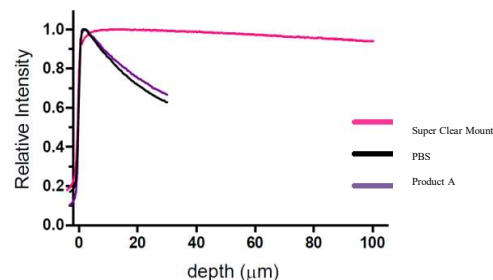
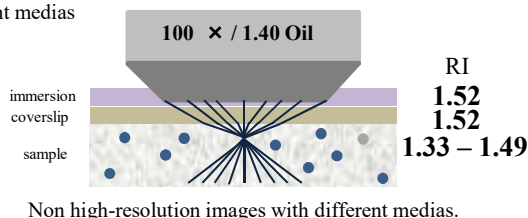


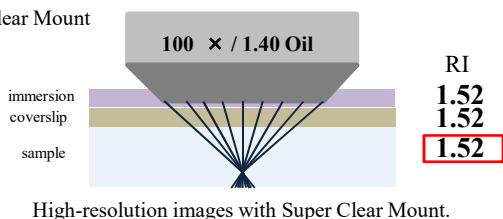
Figure 7. Confocal axial scans of rhodamine dye solutions from the interface with the glass coverslip.

Super Clear Mount Summary

Different medias



Super Clear Mount



	Super Clear Mount
Curing	Non-curing and mounted sample stock for 1yr >.
Refractive index (RI)	1.52
Recommend sample size	0 ~ 200 μm
Photobleaching protection	+++
Stock temperature	RT

+++ : best

Product name	Wako cat. No.	Package Size	Storage Condition	Grade
Super Clear Mount	190-18661	10ml	Keep at RT	Cell Biology

- Listed products are intended for laboratory research use only, and not to be used for drug, food or human use.
- This brochure may contain products that cannot be exported to your country due to regulations.
- Bulk quote requests for some products are welcome. Please contact us.

FUJIFILM Wako Pure Chemical Corporation

1-2, Doshomachi 3-Chome
Chuo-Ku, Osaka 540-8605, Japan
Tel: 81-6-6203-3741
Fax: 81-6-6203-1999

FUJIFILM Wako Chemicals U.S.A. Corporation

Toll-Free (U.S. only): 1-877-714-1920
Head Office (Richmond, VA)
Tel: 1-804-714-1920
Fax: 1-804-271-7791

FUJIFILM Wako Chemicals Europe GmbH

European Office:
Fuggerstraße 12, D-41468, Neuss, Germany
Tel: 49-2131-311-0
Fax: 49-2131-311100