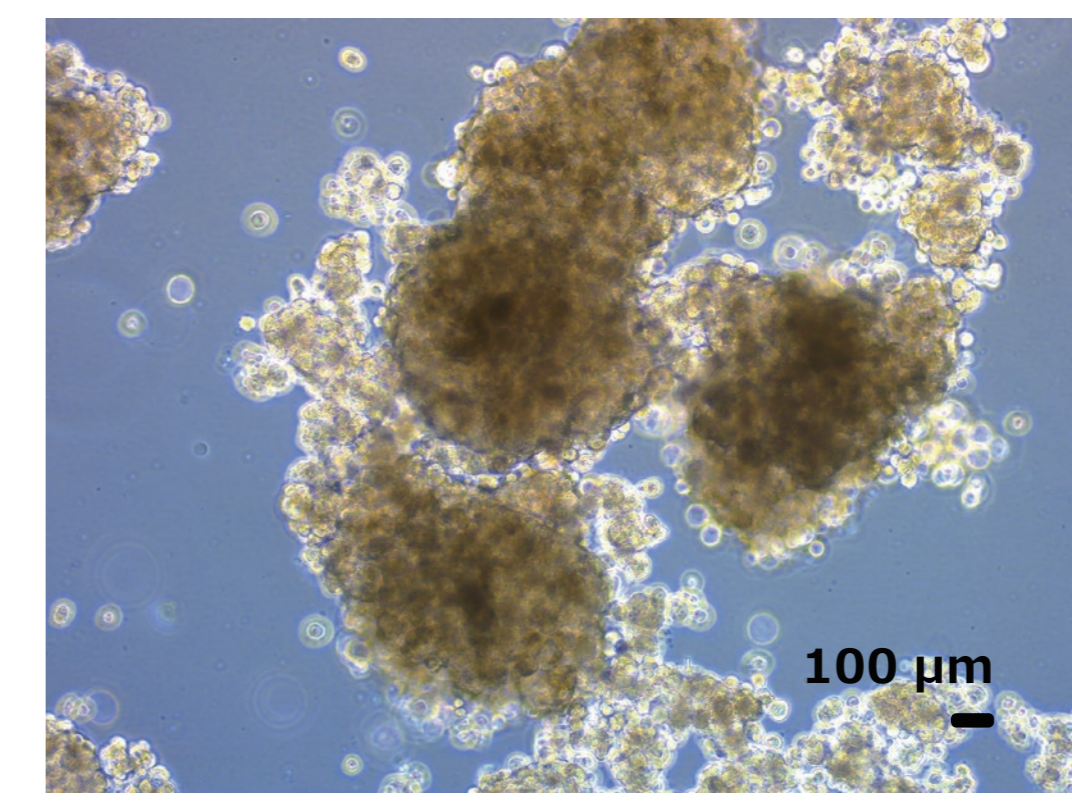


Analysis of F-PDO using Olympus 3D analysis software "NoviSight™"

RLUN21: Lung squamous cell carcinoma



Ki67 positive cells

Green: Ki67 Blue: DAPI

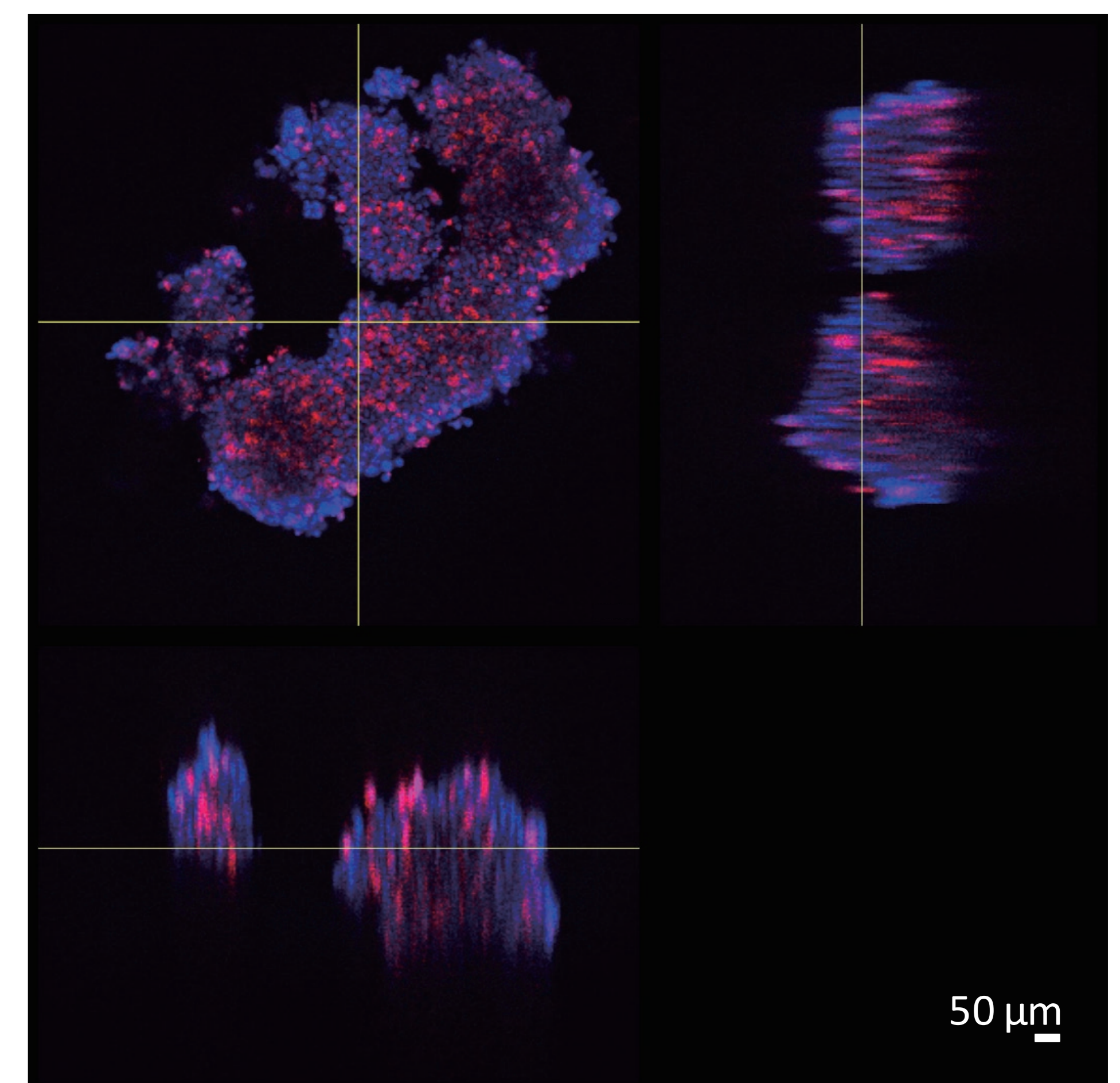
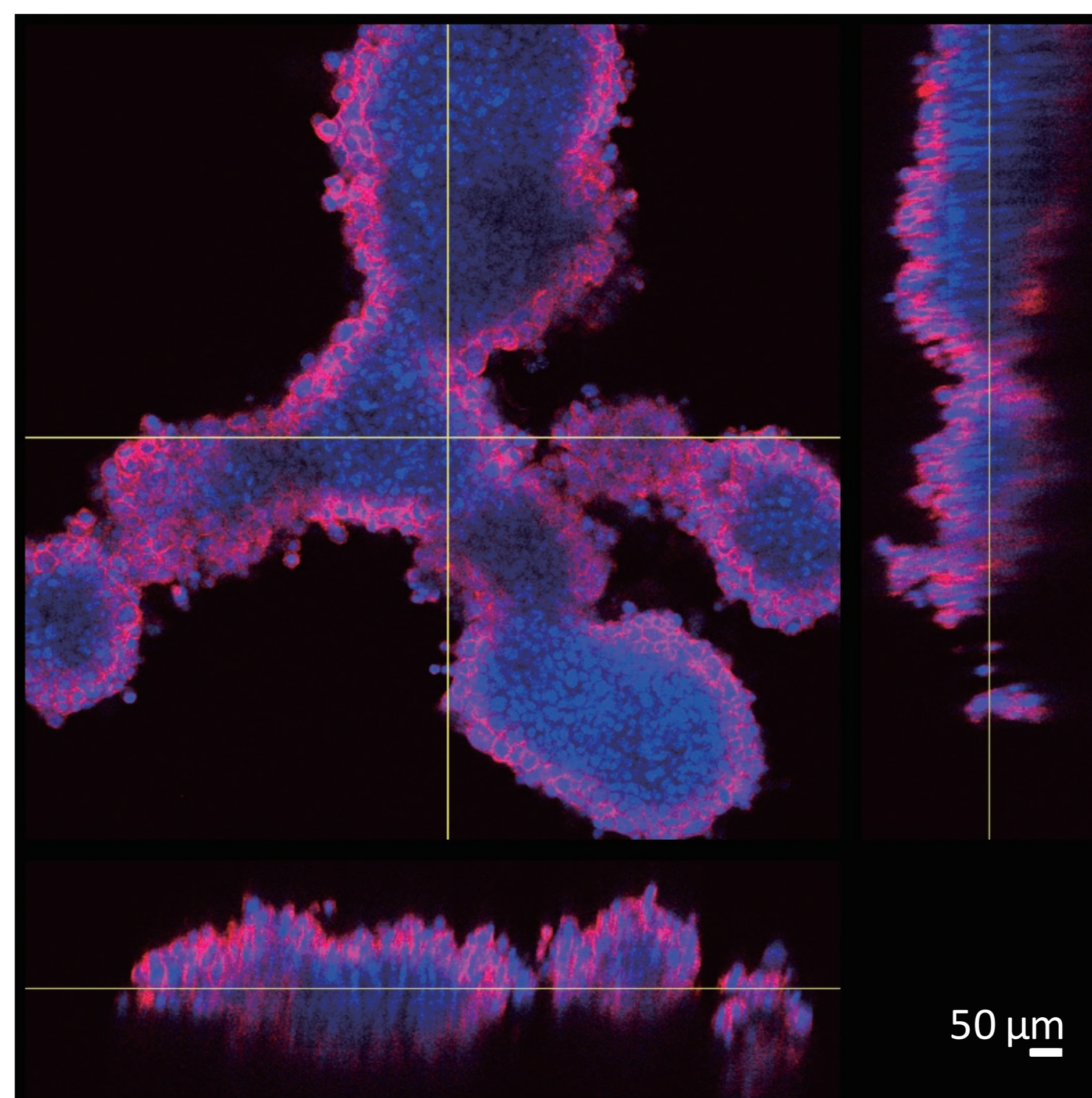
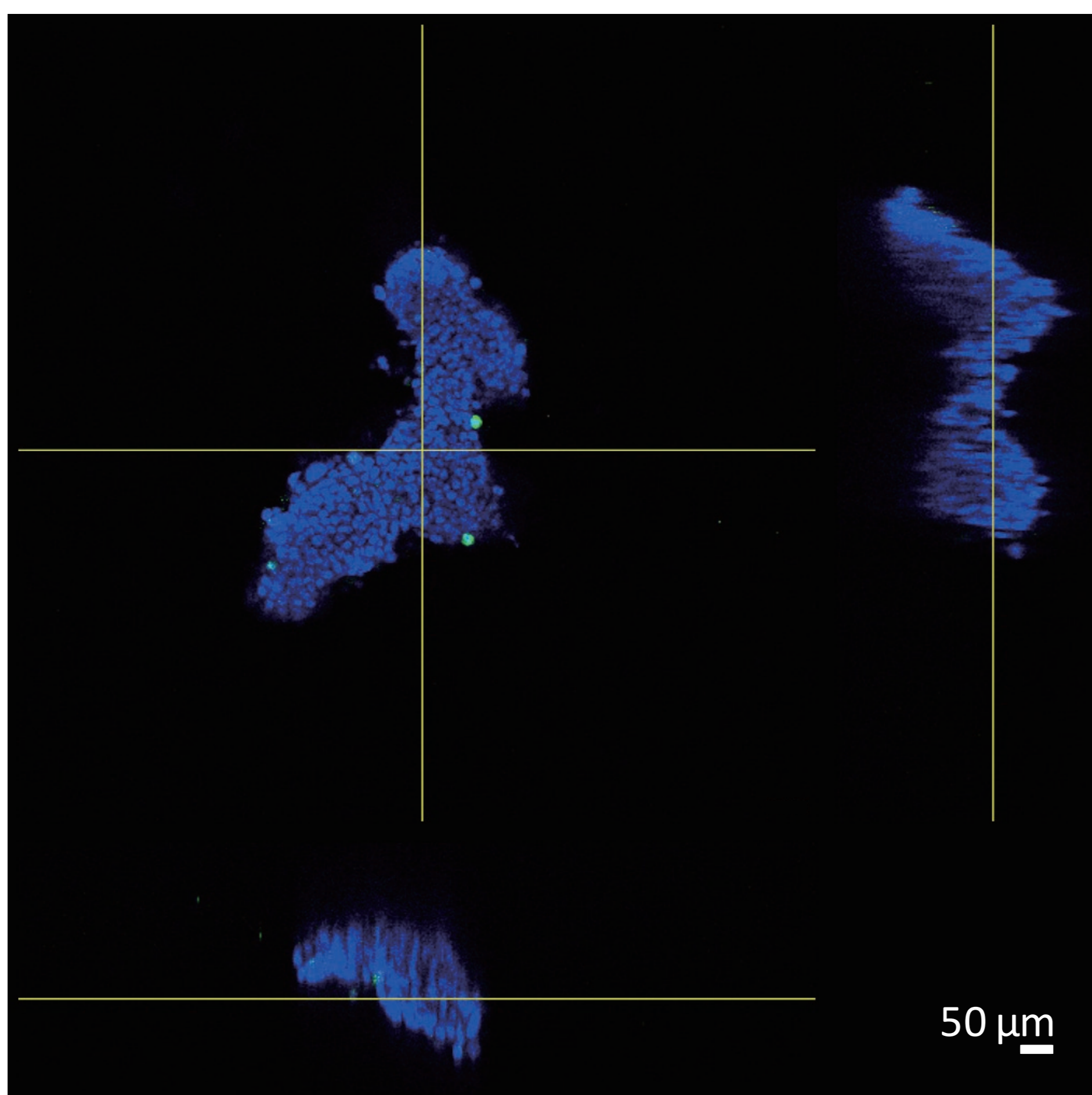
EGFR positive cells

Red: Erbitux Blue: DAPI

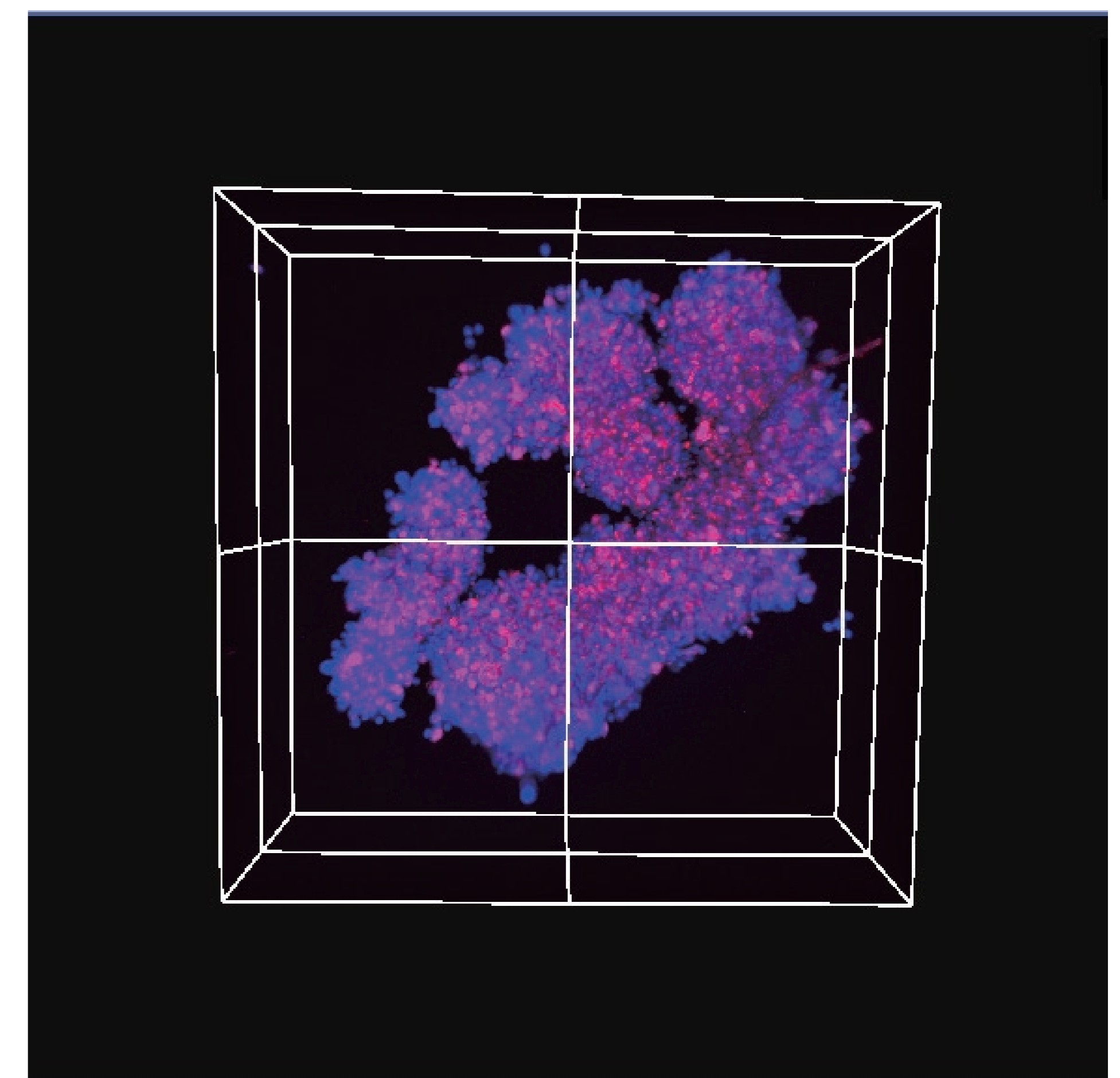
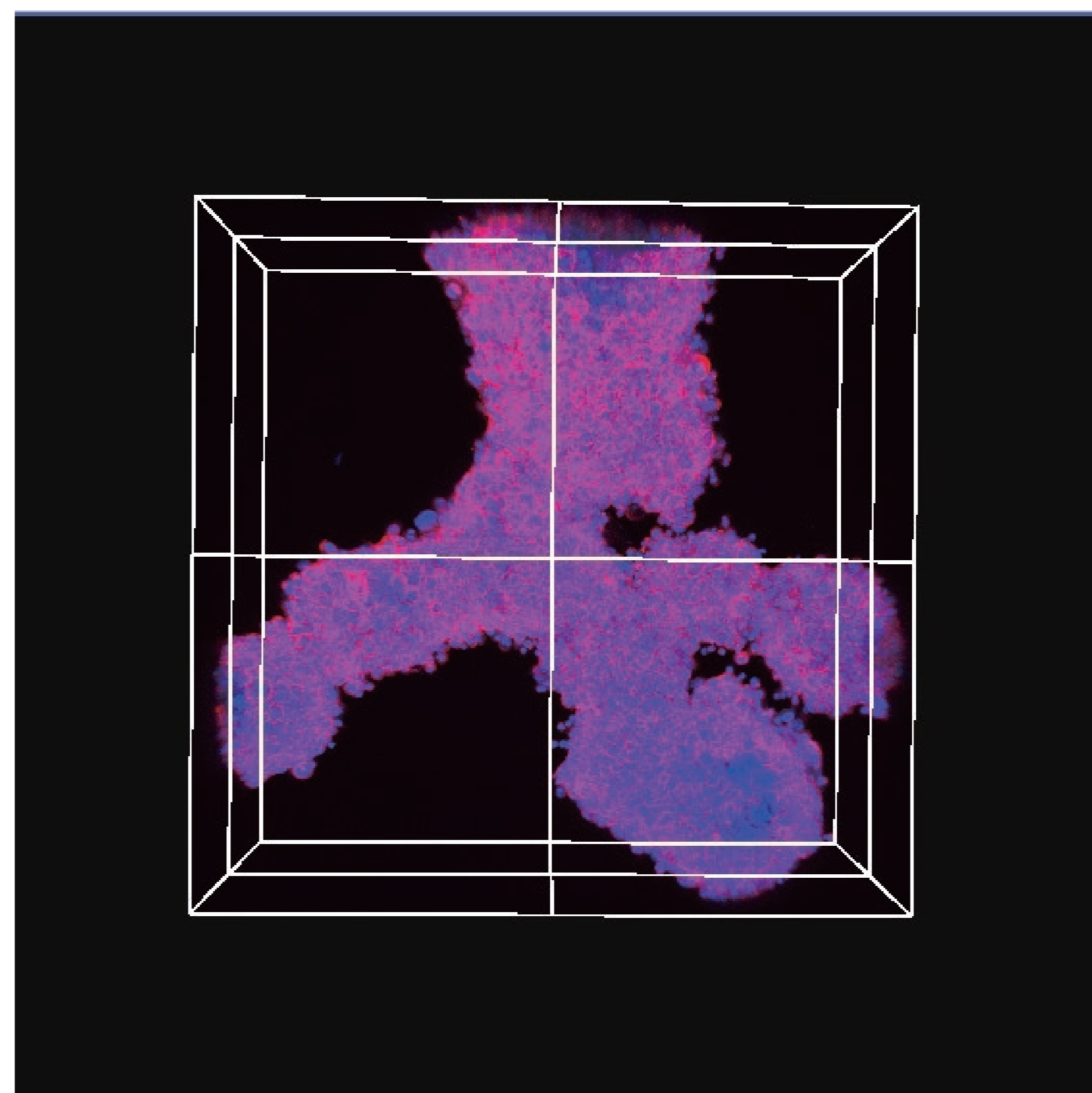
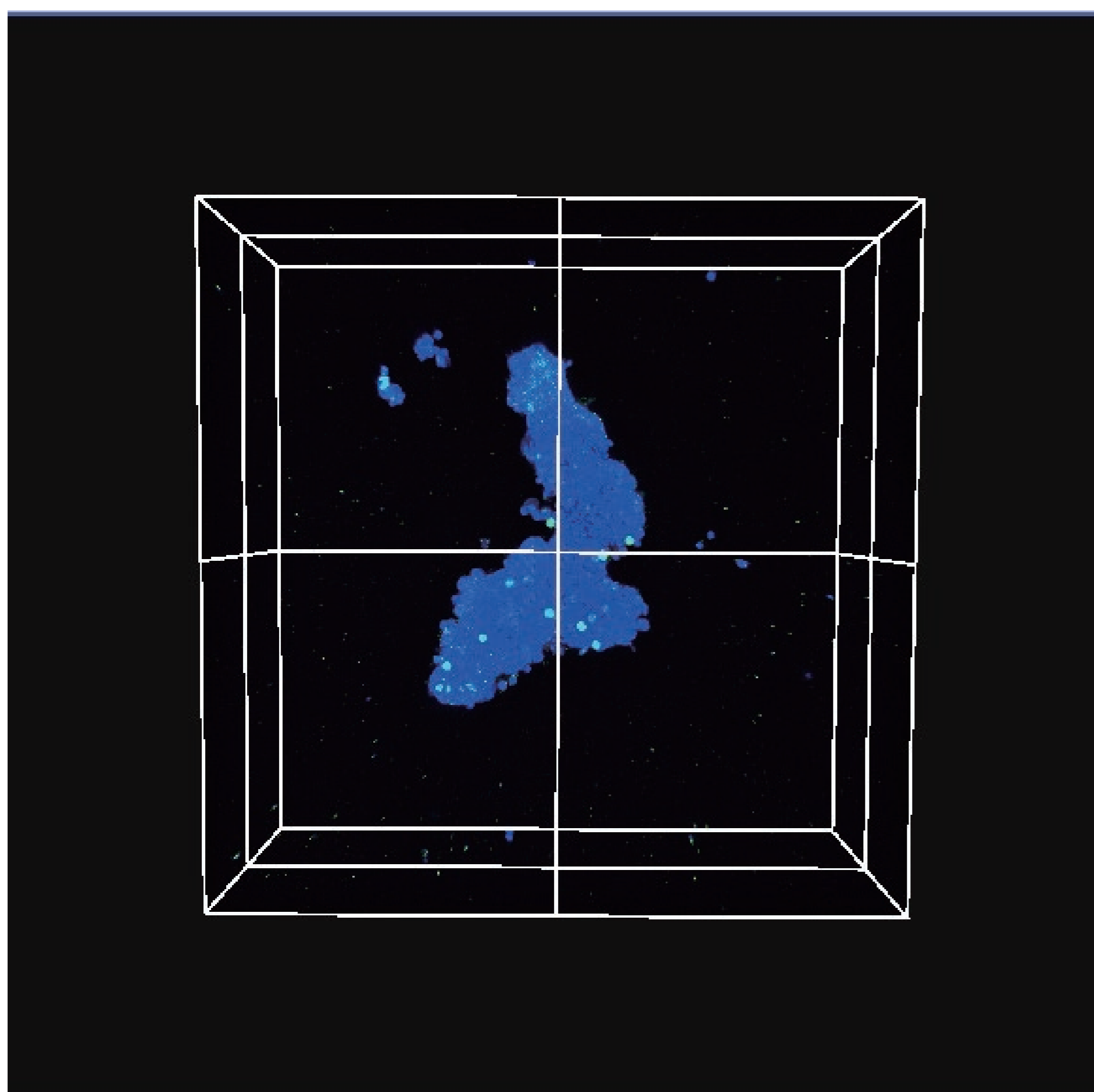
HER2 positive cells

Red: Herceptin Blue: DAPI

Three sides view



Volume view



Cell number (nuclear number)	3.4×10^3
Surface area (pixels)	7.2×10^5
Cell volume (voxels)	2.0×10^7
Cell density (number/volume)	1.7×10^{-4}
Positive cell number	5.7×10^1
Positive cell number ratio (%)	1.7

Cell number (nuclear number)	1.9×10^4
Surface area (pixels)	3.0×10^6
Cell volume (voxels)	1.2×10^8
Cell density (number/volume)	1.6×10^{-4}
Positive cell volume (voxels)	5.6×10^7
Positive cell volume ratio (%)	46

Cell number (nuclear number)	5.6×10^3
Surface area (pixels)	2.7×10^6
Cell volume (voxels)	8.8×10^7
Cell density (number/volume)	6.4×10^{-5}
Positive cell volume (voxels)	4.9×10^7
Positive cell volume ratio (%)	56

This data was obtained in collaboration research with Olympus Corporation.

✉ **Contact information** 🖥️

Translational Research Center, Fukushima Medical University

✉ **Email address**
i-san-tr@fmu.ac.jp

🖥️ **English website "Contract Research"**
<https://www.fmu.ac.jp/home/trc/en/contract/>

