

Drug Sensitivity: F-PDOs vs Cell Lines

F-PDOs exhibit different sensitivity to anti-cancer drugs compared with cell lines.

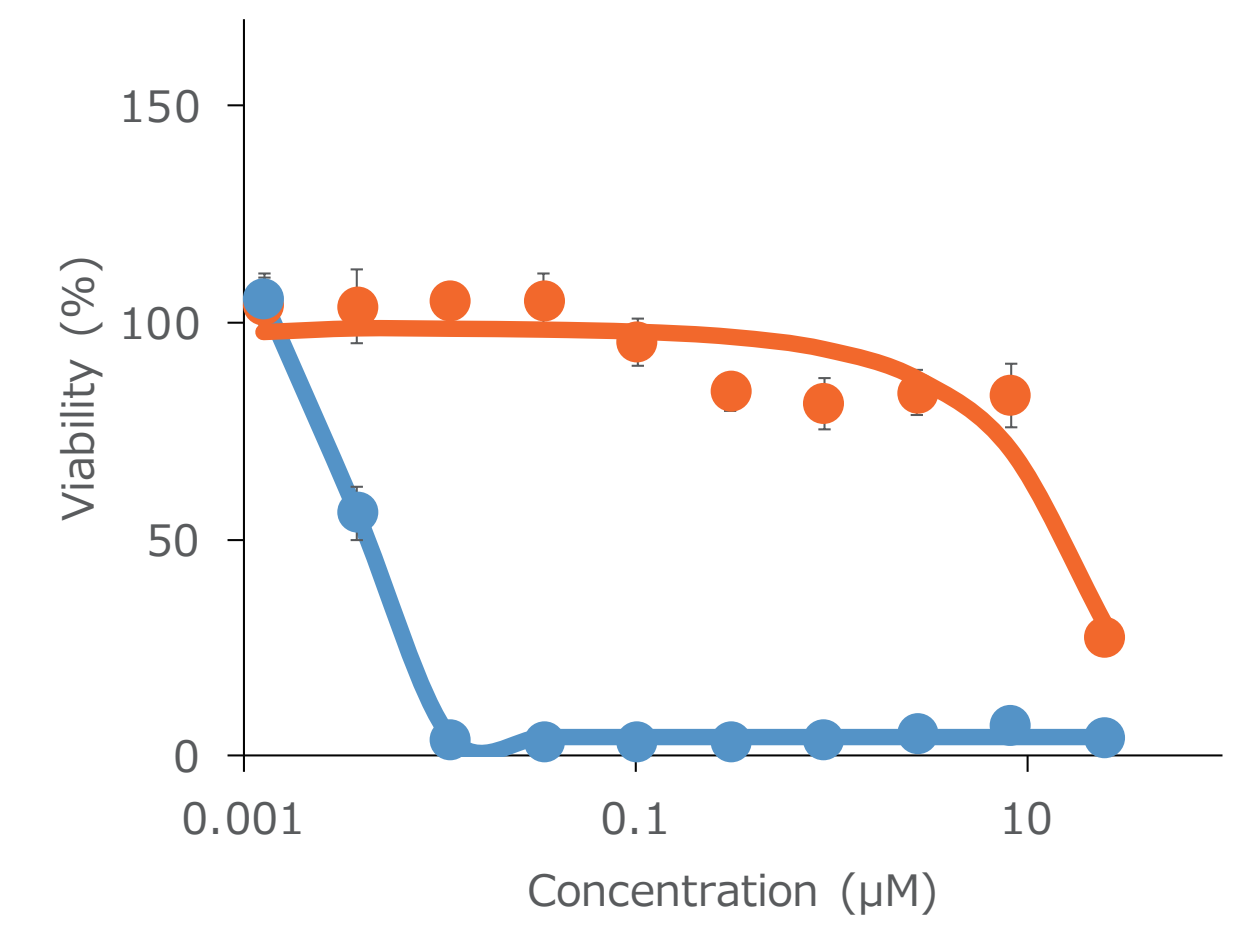
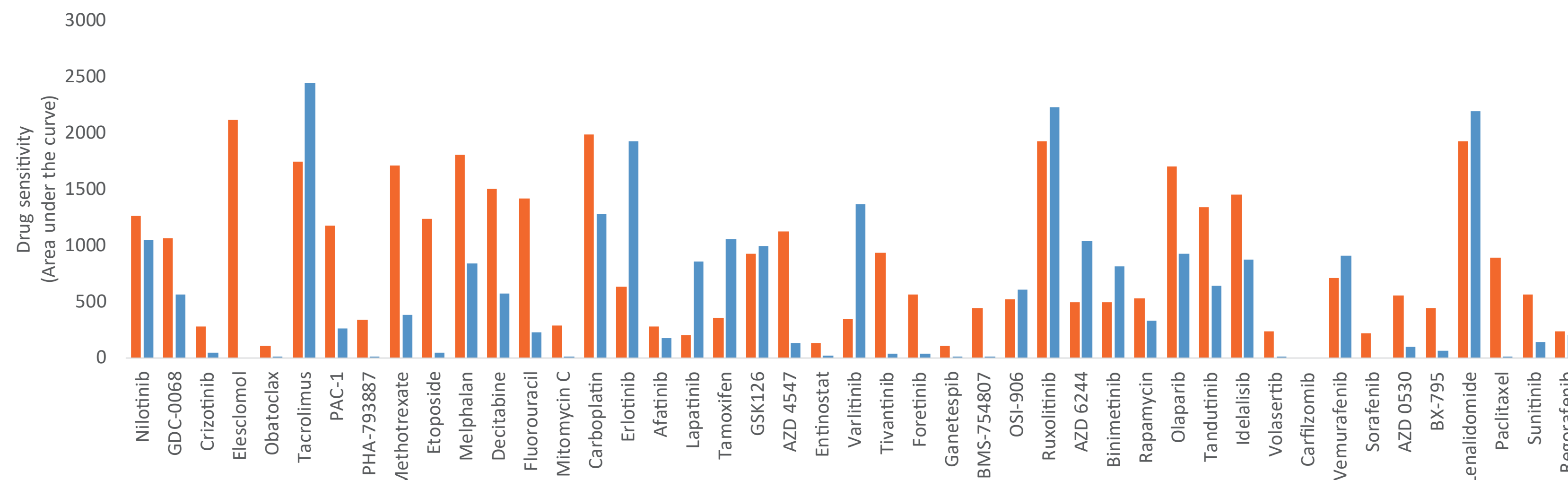
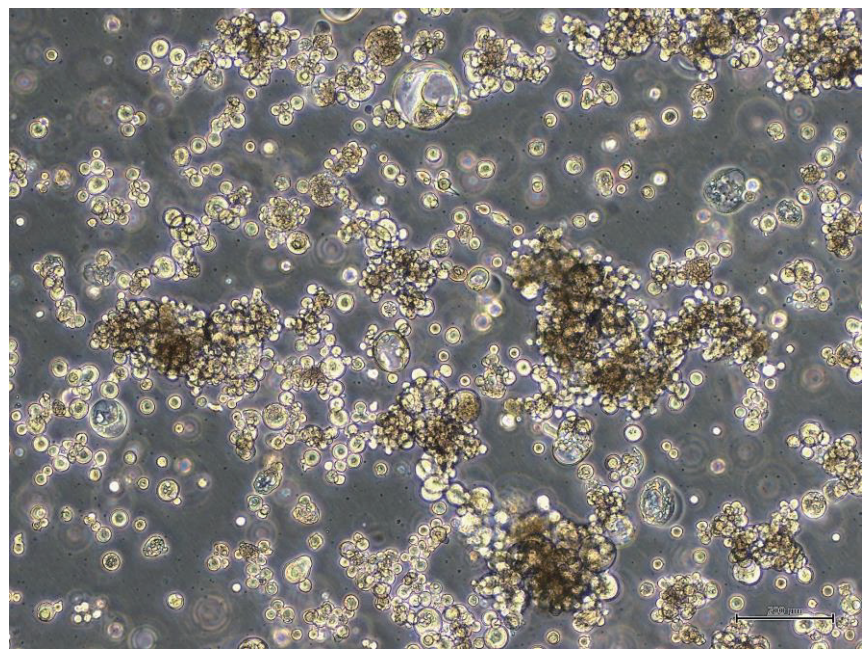
Lung cancer (Adenosquamous carcinoma)

F-PDO: RLUN004

Drug sensitivity: vs cell line (LK-2)

■ F-PDO ■ Cell line

Paclitaxel sensitivity

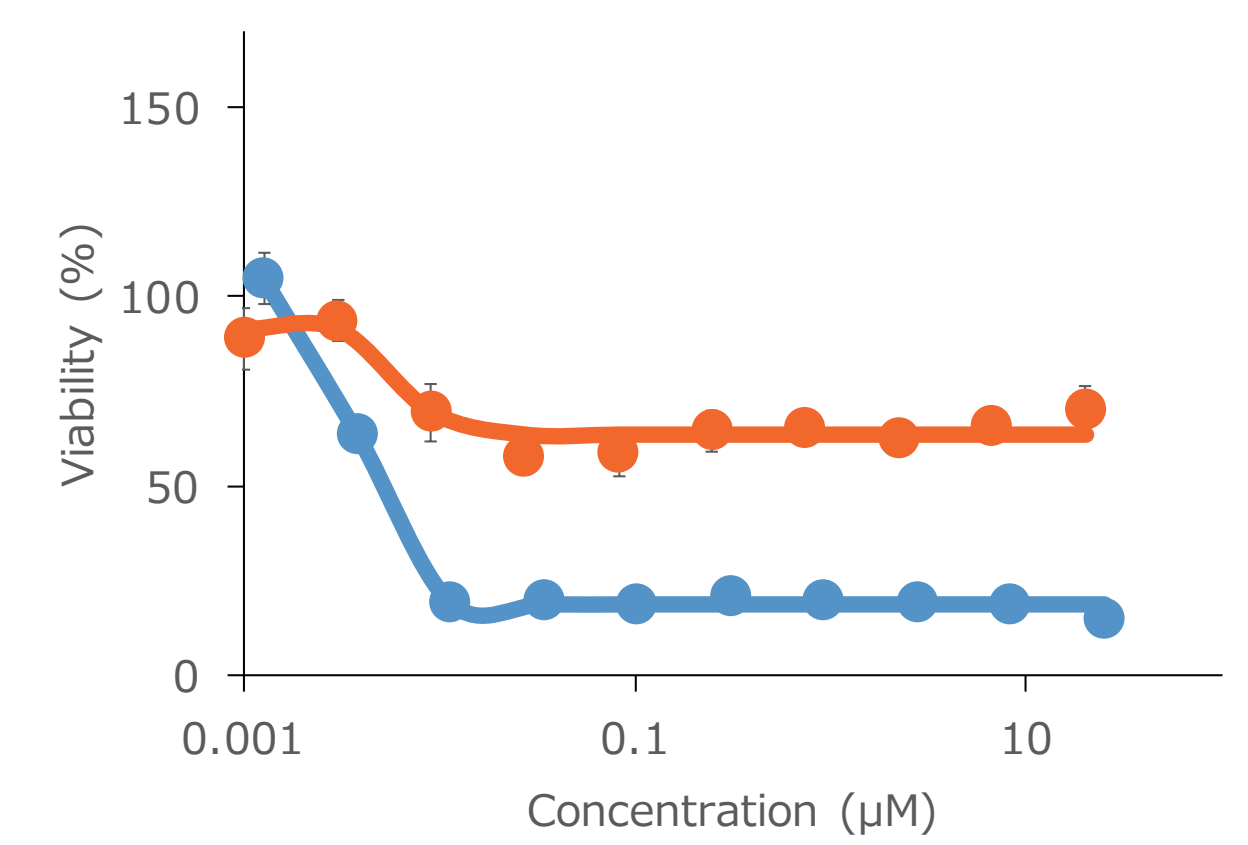
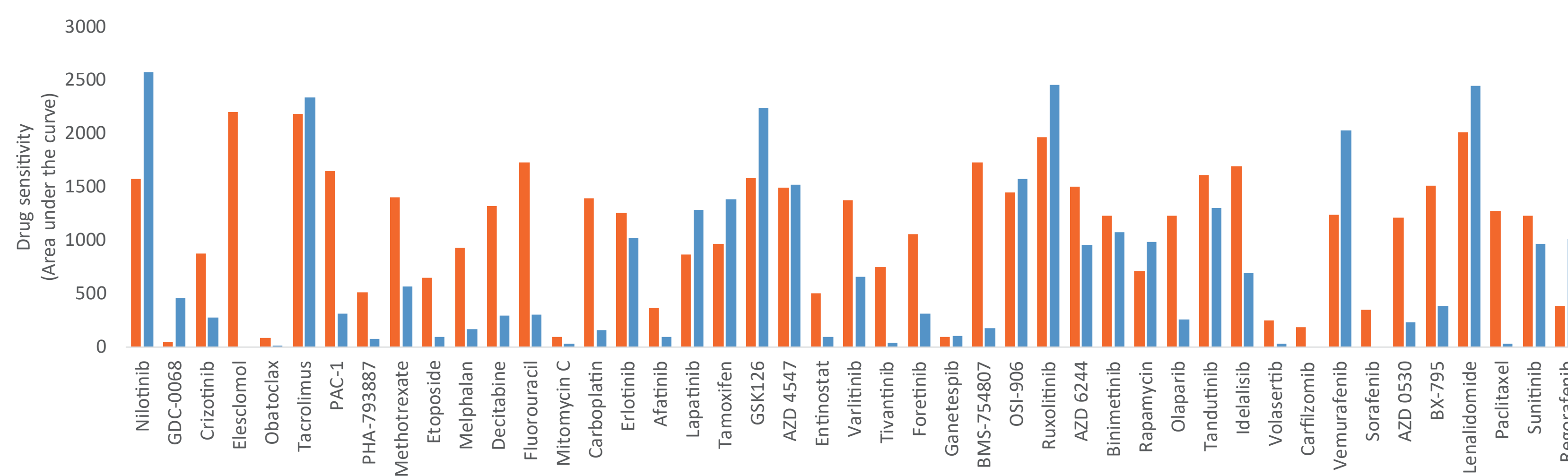
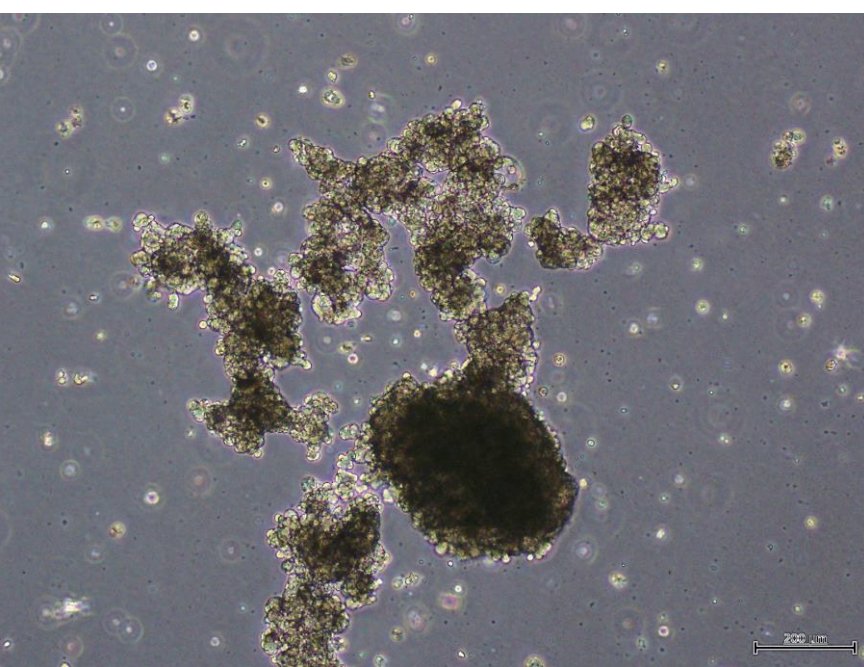


Ovarian cancer (Clear cell adenocarcinoma)

F-PDO: ROVA010

Drug sensitivity: vs cell line (NIH:OVCAR-3)

Paclitaxel sensitivity

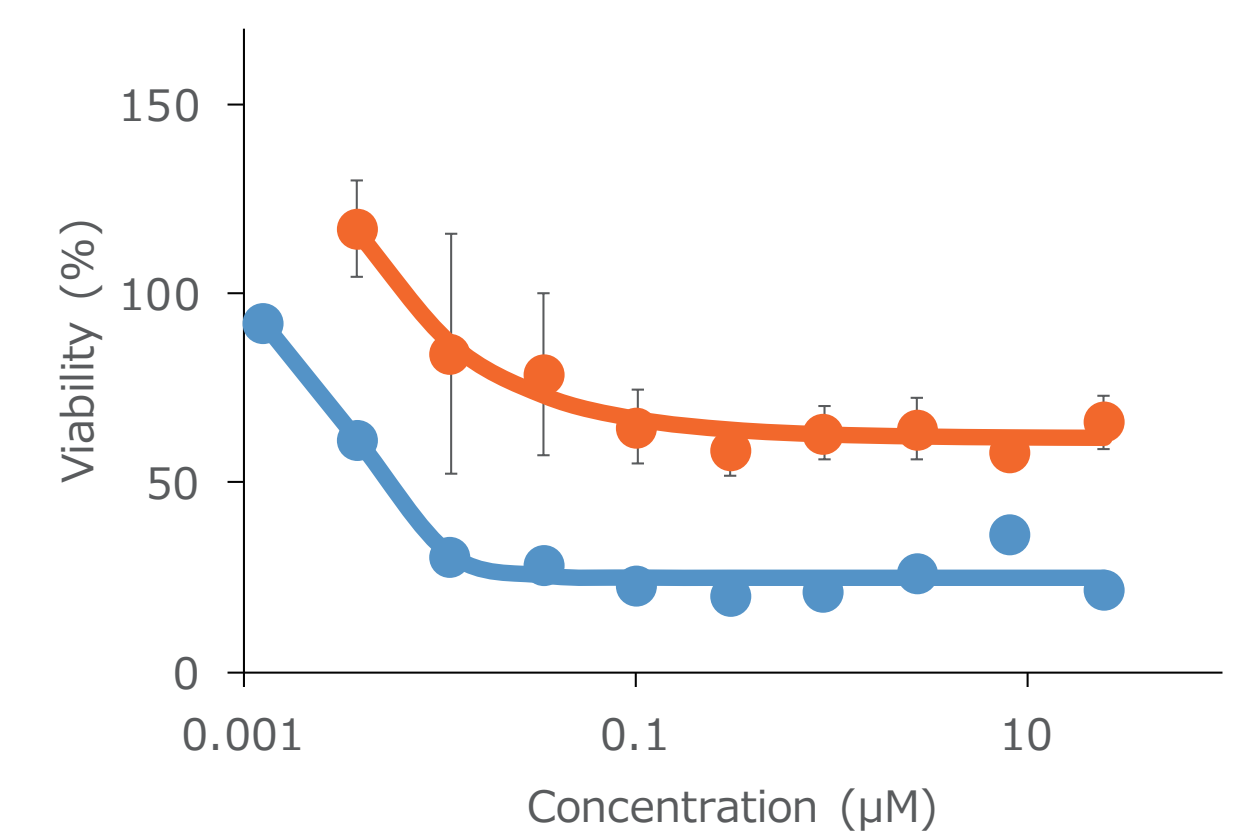
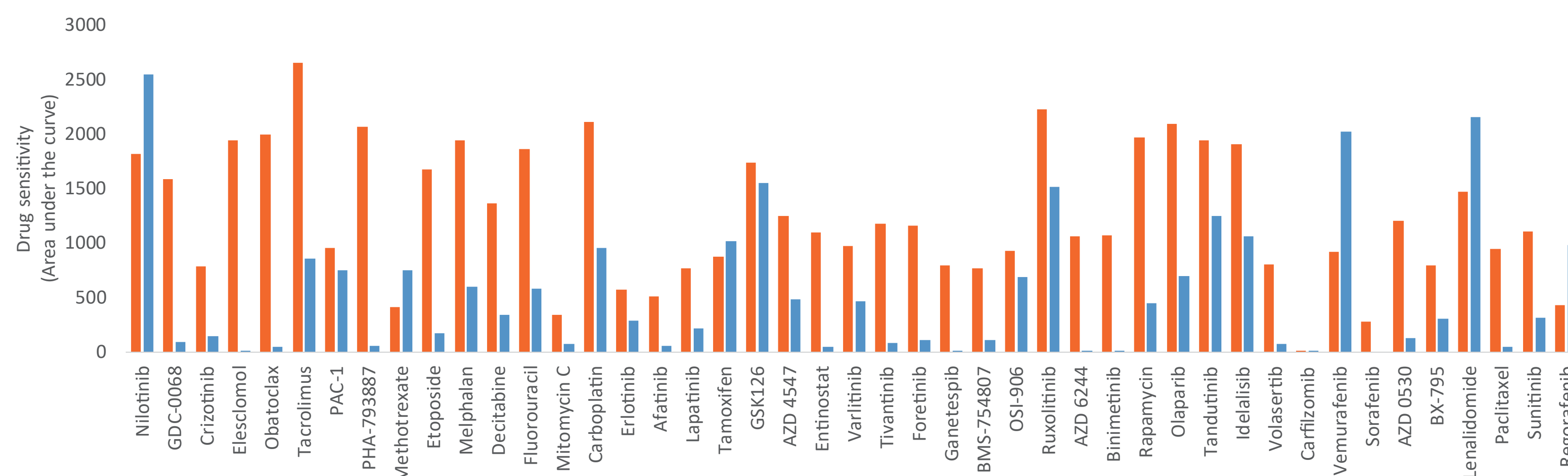
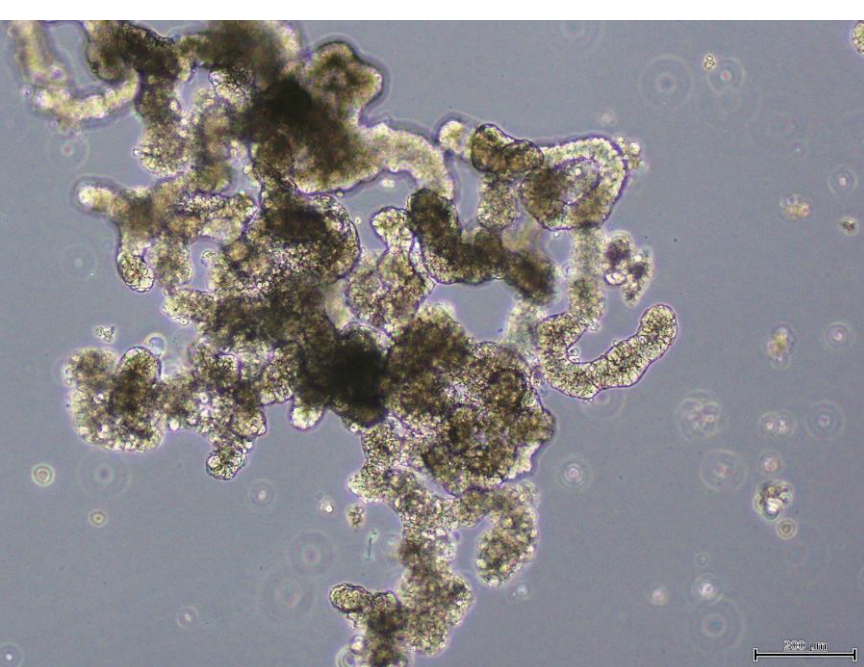


Endometrial cancer (Clear cell adenocarcinoma)

F-PDO: REME011

Drug sensitivity: vs cell line (RL95-2)

Paclitaxel sensitivity



Contract Research & Provision

F-PDX[®]: PDX Models from Japanese Patients

F-PDXs have retained the characteristics of tumor tissues through several *in vivo* passages.

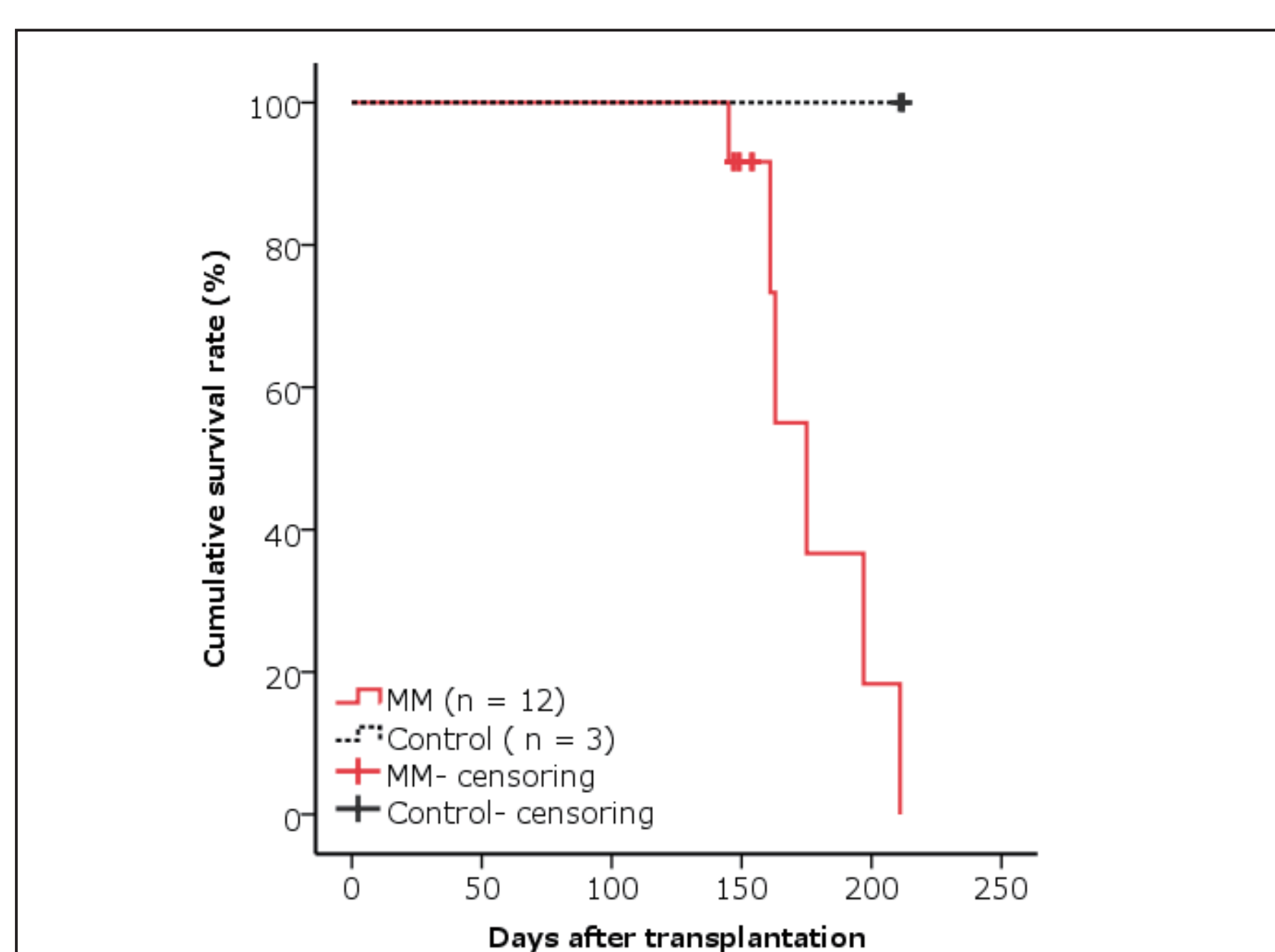
132 F-PDXs have been established.

- ➔ Solid tumor: 98
- ➔ Hematopoietic tumor: 34

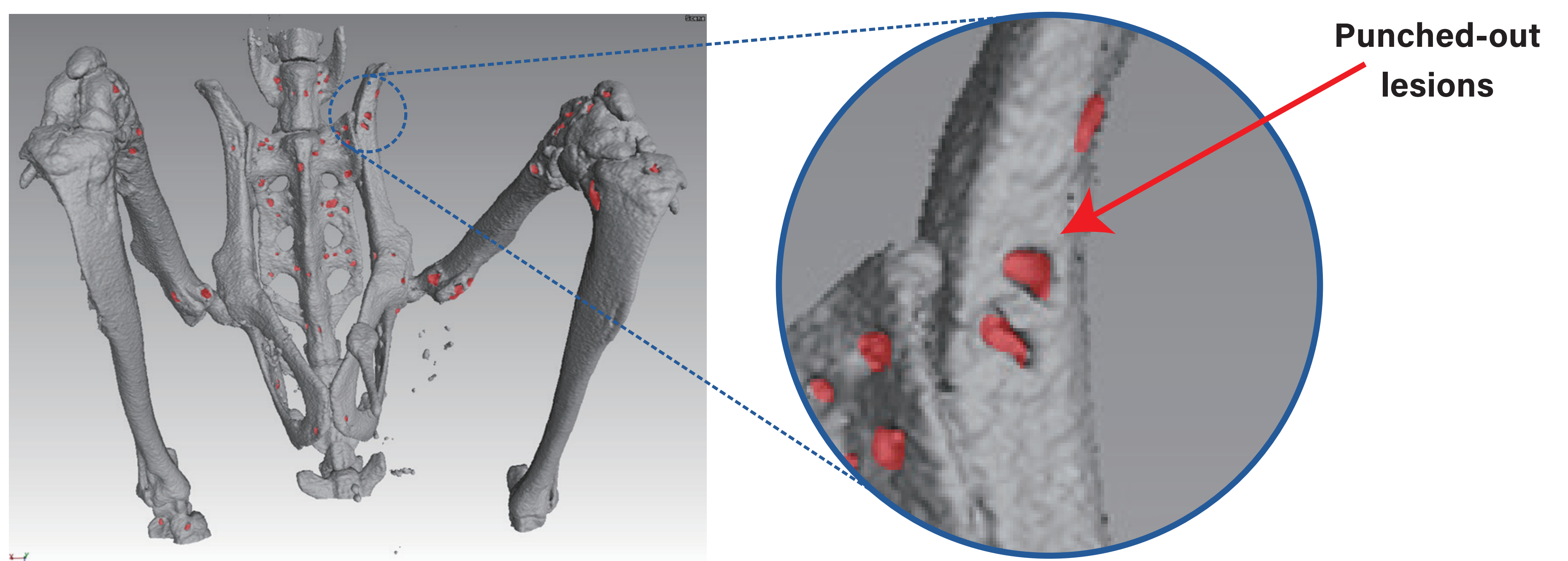
Applications

- *In vivo* assessment of anticancer agents
- Biomarker development

Human multiple myeloma (MM) xenograft model



Kaplan-Meier curve of survival rate in the MM xenografts.



Punched-out lesions (red area) were clearly observed in femur, tibia, coxa and sacral vertebra of the mice using the three dimensional CT imaging.